

FORMENTERA



VISTABELLA GOLF HOMES
C/Melocotonero nº 2, Local 7, 03319 Orihuela (Alicante)
www.vistabellagolfhomes.com

VISTABELLA MASTER PLAN

Enjoy a different lifestyle
at Vistabella Golf

- | | | | |
|---|-------------------------------------|---|--|
|  | CASA CLUB /
CLUB HOUSE |  | ZONA VERDE (AYUNTAMIENTO) /
PUBLIC GREEN AREA |
|  | CADDY MASTER /
GOLF SHOP |  | FUTUROS PROYECTOS /
FUTURE PROJECTS |
|  | OFICINA DE VENTAS /
SALES OFFICE |  | EQUIPAMIENTO PÚBLICO /
PUBLIC FACILITIES |
|  | BUS PÚBLICO /
PUBLIC BUS |  | SECTOR TERCIARIO (COMERCIAL) /
COMMERCIAL TERTIARY SECTOR |
|  | SUPERMERCADO /
SUPERMARKET |  | PROYECTO TERMINADO /
FINISHED PROJECT |
|  | PÁDDEL /
PADDLE TENNIS |  | PROYECTOR A LA VENTA /
PROJECT FOR SALE |
|  | FARMACIA /
PHARMACY | | |
|  | RESTAURANTE /
RESTAURANT | | |



Este plano es solamente para fines comerciales y no tiene ningún valor contractual. La atribución interior de las parcelas no aplicable no está definida.



This plan is only for commercial purposes and has no contractual value. The interior project plots are not defined for use and will be subject to modification.

EMPLACEMENTS

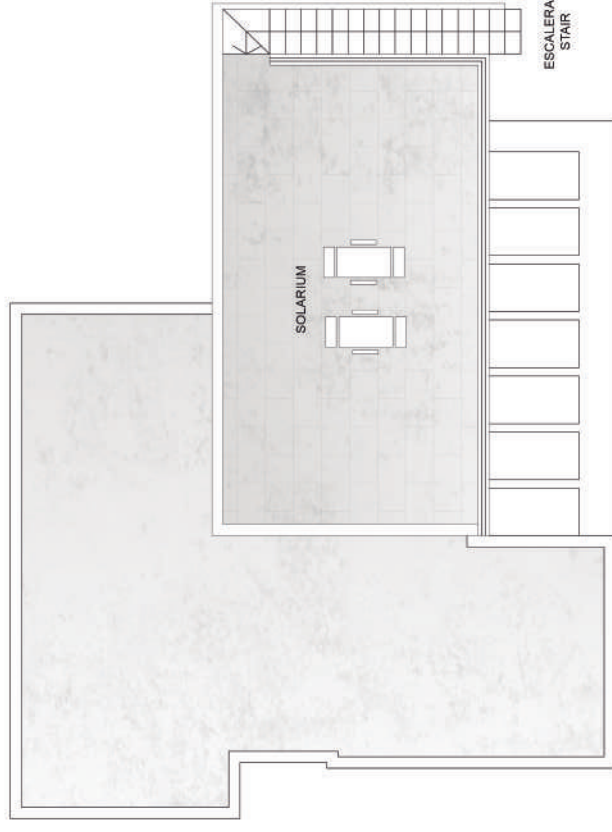
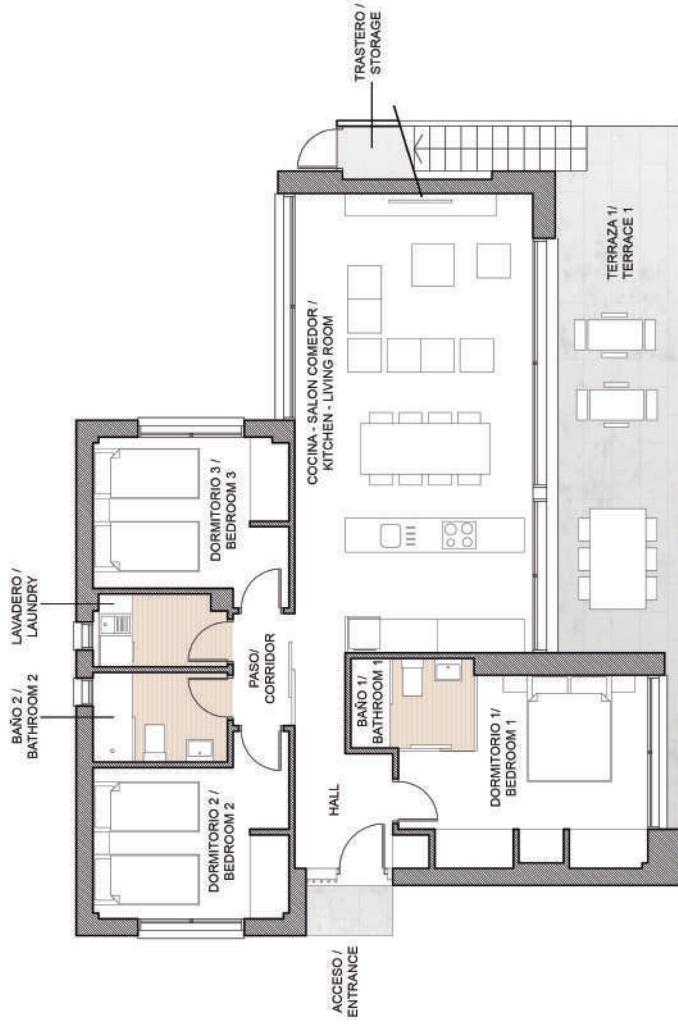
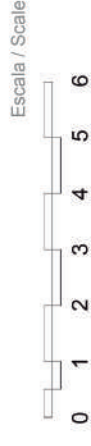


Parcelas emplacements

1	361,34 m ²	21	307,05 m ²	36	309,63 m ²
2	304,42 m ²	22	307,05 m ²	37	309,63 m ²
3	308,49 m ²	23	307,05 m ²	38	377,51 m ²
4	312,56 m ²	24	307,05 m ²		
5	316,63 m ²	25	307,05 m ²		
6	320,70 m ²	16	307,05 m ²	31	309,63 m ²
7	324,78 m ²	17	307,05 m ²	32	309,63 m ²
8	328,85 m ²	18	307,05 m ²	33	309,63 m ²
9	332,92 m ²	19	307,05 m ²	34	309,63 m ²
10	337,00 m ²	20	307,05 m ²	35	309,63 m ²
11	341,06 m ²	11	342,59 m ²		
12	345,14 m ²	12	311,35 m ²		
13	413,79 m ²	13	309,63 m ²		
14	371,67 m ²	14	309,63 m ²		
15	307,05 m ²	15	309,63 m ²		

MODEL VILLA FORMENTERA

3 BEDROOMS



PLANTA BAJA / GROUND FLOOR

Superficie construida / Built area

PROPIEDAD / PROPERTY	106,10 m ²
TERRAZAS / TERRACES	21,35 m ²
SOLARIUM	37,47 m ²
TOTAL CONSTRUIDA / BUILT AREA	164,92 m²

Planta Baja / Ground Floor

Superficies útiles / Useful surface

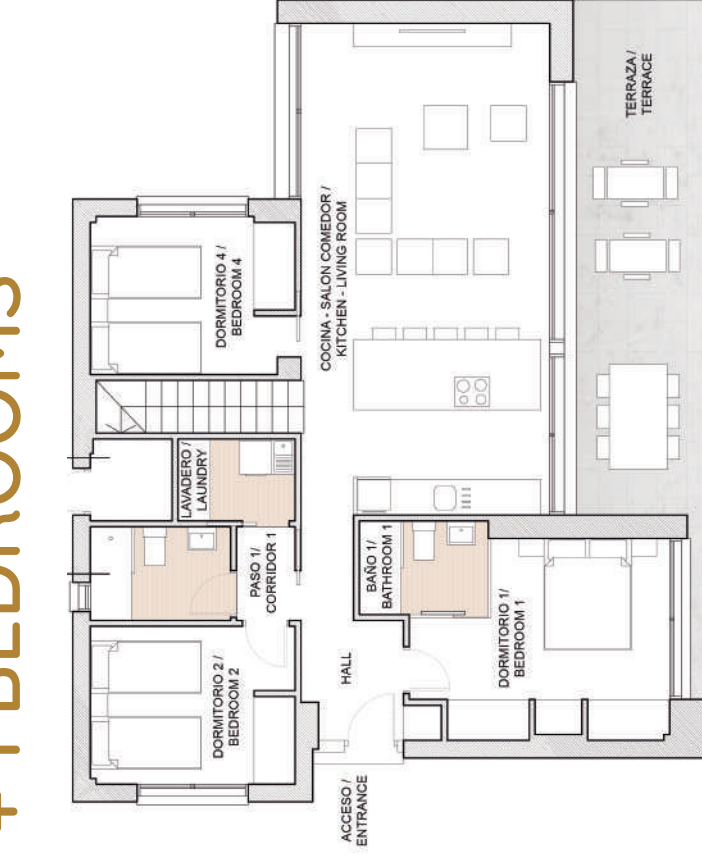
ACCESO / ENTRANCE	1,39 m ²
HALL	5,60 m ²
DORMITORIO 1 / BEDROOM 1	13,03 m ²
BAÑO 1 / BATHROOM 1	3,52 m ²
COCINA-SALÓN COMEDOR / KITCHEN - LIVING ROOM	34,85 m ²
DORMITORIO 2 / BEDROOM 2	10,01 m ²
BAÑO 2 / BATHROOM 2	3,84 m ²
TERRAZA 1 / TERRACE 1	21,35 m ²
TRASTERO / STORAGE	1,75 m ²
LAVADERO / LAUNDRY	3,00 m ²
PASO / CORRIDOR	2,10 m ²
DORMITORIO 3 / BEDROOM 3	9,69 m ²
TERRAZA / TERRACE	21,35 m ²
SOLARIUM	37,47 m ²
ESCALERA / STAIR	4,02 m ²

SOLARIUM

ACCESO / ENTRANCE	1,39 m ²
HALL	5,60 m ²
DORMITORIO 1 / BEDROOM 1	13,03 m ²
BAÑO 1 / BATHROOM 1	3,52 m ²
COCINA-SALÓN COMEDOR / KITCHEN - LIVING ROOM	34,85 m ²
DORMITORIO 2 / BEDROOM 2	10,01 m ²
BAÑO 2 / BATHROOM 2	3,84 m ²
TERRAZA 1 / TERRACE 1	21,35 m ²
TRASTERO / STORAGE	1,75 m ²
LAVADERO / LAUNDRY	3,00 m ²
PASO / CORRIDOR	2,10 m ²
DORMITORIO 3 / BEDROOM 3	9,69 m ²
TERRAZA / TERRACE	21,35 m ²
SOLARIUM	37,47 m ²
ESCALERA / STAIR	4,02 m ²

MODEL VILLA FORMENTERA

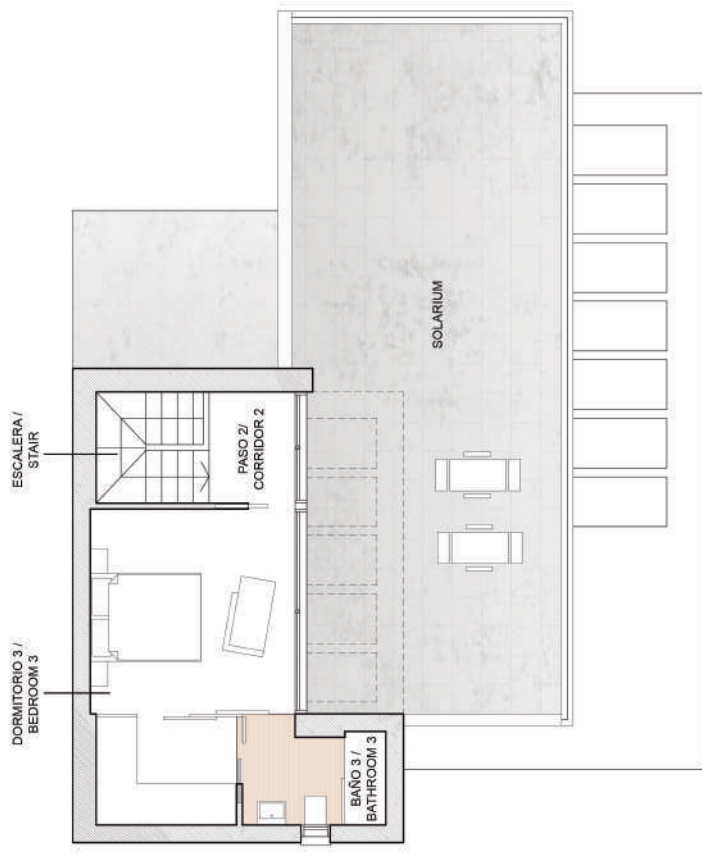
3 + 1 BEDROOMS



PLANTA BAJA /
GROUND FLOOR

Superficie construida / Built area

PROPIEDAD / PROPERTY	144.43 m ²
TERRAZAS / TERRACES	19.80 m ²
SOLARIUM	52.20 m ²
TOTAL CONSTRUIDA / BUILT AREA	216.43 m²



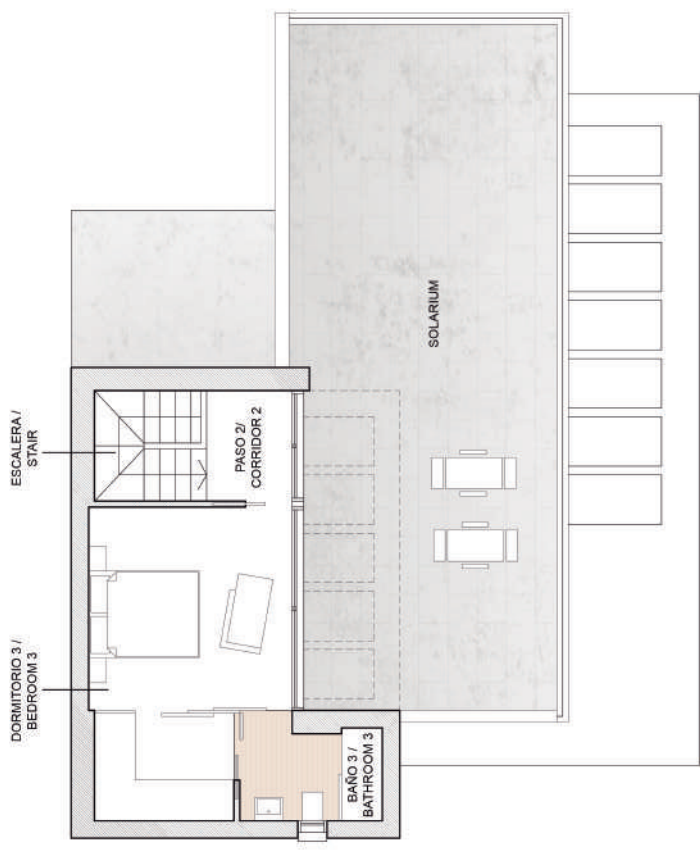
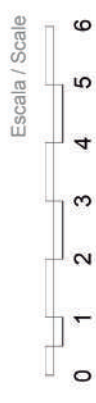
PLANTA ALTA /
TOP FLOOR

Planta Alta / Top Floor Superficies útiles / Useful surface

1,39 m ²	5,40 m ²	13,03 m ²	3,52 m ²	35,70 m ²	9,37 m ²	9,20 m ²	3,84 m ²	1,60 m ²	2,80 m ²	1,95 m ²	19,80 m ²
ACCESO / ENTRANCE	HALL	DORMITORIO 1 / BEDROOM 1	BAÑO 1 / BATHROOM 1	COCINA-SALÓN COMEDOR / KITCHEN - LIVING ROOM	DORMITORIO 2 / BEDROOM 2	DORMITORIO 4 / BEDROOM 4	BAÑO 2 / BATHROOM 2	PASO 1 / CORRIDOR 1	LAVADERO / LAUNDRY	TRASTERO / STORAGE	TERRAZA / TERRACE
1,39 m ²	5,40 m ²	13,03 m ²	3,52 m ²	35,70 m ²	9,37 m ²	9,20 m ²	3,84 m ²	1,60 m ²	2,80 m ²	1,95 m ²	19,80 m ²
ESCALERA / STAIR	PASO 2 / CORRIDOR 2	DORMITORIO 3 / BEDROOM 3	BAÑO 3 / BATHROOM 3	SOLARIUM	ESCALERA / STAIR	PASO 2 / CORRIDOR 2	DORMITORIO 3 / BEDROOM 3	BAÑO 3 / BATHROOM 3	SOLARIUM		
					5,10 m ²	2,79 m ²	16,80 m ²	4,10 m ²	52,20 m ²		

MODEL VILLA FORMENTERA

2+1 BEDROOMS

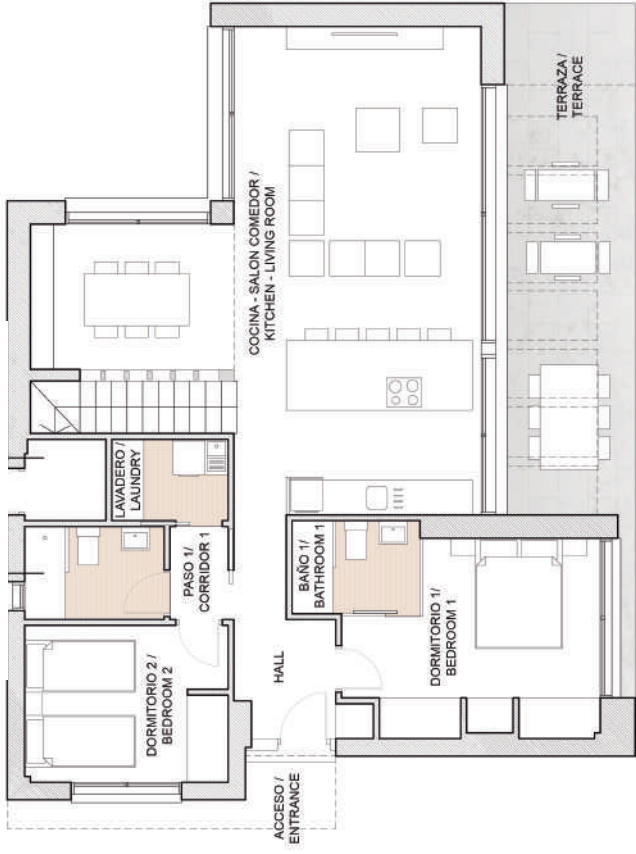


PLANTA ALTA / TOP FLOOR

DORMITORIO 1 / BEDROOM 1	1,39 m ²
DORMITORIO 2 / BEDROOM 2	5,40 m ²
DORMITORIO 3 / BEDROOM 3	13,03 m ²
BAÑO 1 / BATHROOM 1	3,52 m ²
COCINA-SALÓN COMEDOR / KITCHEN - LIVING ROOM	44,65 m ²
DORMITORIO 2 / BEDROOM 2	9,37 m ²
BAÑO 2 / BATHROOM 2	3,84 m ²
PASO 1 / CORRIDOR 1	1,60 m ²
LAVADERO / LAUNDRY	2,80 m ²
TRASTERO / STORAGE	1,95 m ²
TERRAZA / TERRACE	19,80 m ²

Planta Alta / Top Floor
Superficies útiles / Useful surface

ESCALERA / STAIR	5,10 m ²
PASO 2 / CORRIDOR 2	2,79 m ²
DORMITORIO 3 / BEDROOM 3	16,80 m ²
BAÑO 3 / BATHROOM 3	4,10 m ²
SOLARIUM	52,20 m ²



PLANTA BAJA / GROUND FLOOR

ACCESO / ENTRANCE	1,39 m ²
HALL	5,40 m ²
DORMITORIO 1 / BEDROOM 1	13,03 m ²
BAÑO 1 / BATHROOM 1	3,52 m ²
COCINA-SALÓN COMEDOR / KITCHEN - LIVING ROOM	44,65 m ²
DORMITORIO 2 / BEDROOM 2	9,37 m ²
BAÑO 2 / BATHROOM 2	3,84 m ²
PASO 1 / CORRIDOR 1	1,60 m ²
LAVADERO / LAUNDRY	2,80 m ²
TRASTERO / STORAGE	1,95 m ²
TERRAZA / TERRACE	19,80 m ²

Planta Baja / Ground Floor
Superficies útiles / Useful surface

Superficie construida / Built area

PROPIEDAD / PROPERTY	144,43 m ²
TERRAZAS / TERRACES	19,80 m ²
SOLARIUM	52,20 m ²
TOTAL CONSTRUIDA / BUILT AREA	216,43 m²

“Specifications Formentera”

EXTERIOR CARPENTRY, BLINDS AND GLASSES

Main entrance armored door in white colour, with shiny chrome knob.

PVC sliding and folding windows, with double security glass with a dehydrated chamber, Climalit type or similar.

PVC electric blinds with thermo acoustic insulation properties.

INTERIOR WOODEN CARPENTRY

White laquered interior doors with stainless steel handlers.

Built in wardrobes with sliding doors, white colour.

PAVEMENTS

Top quality porcelain pieces with thermo-acoustic properties offered by modern, highly energy-efficient construction systems.

Terraces and solarium with top quality porcelain pieces with non-slip properties.

Garden finished with a layer of topsoil.

BATHROOMS

Single lever taps.

White suspended furniture and mirror.

Shower screens not included.

KITCHEN

High quality kitchen furniture in matt white.

Silestone type quartz worktop or similar.

White fiberglass undermount sink.

ELECTRICITY

High degree of electrification.

Electrical installation with separate circuit protections.

Installation of self-consumption photovoltaic panels.

AIR CONDITIONING AND VENTILATION

Ducted air conditioning system pre-installed (hot and cold), machine air conditioning not included.

Control system temperature by zones pre-installed.

Installation of forced extraction ducts for the ventilation of the whole house, according to regulations.

This quality specification may be modified due to technical, construction or commercial requirements, in which case the materials will be replaced by others of similar or higher quality.



Email: info@vistabellagolfhomes.com
Phone: 0034-639 388 376
Phone: 0034-619 185 145