

Dinant

Building Specifications



BUILDING YOUR TIME

PATRIMI

IMPORTANT LEGAL NOTICE: PATRIMI RESORTS, S.L. state that all the promotional material (as planes, images, 3D animations, renders, videos, dossiers, etc.) used in the activity of the promotion of the properties on sale are just an example of the characteristics of these properties once are built. PATRIMI RESORTS, S.L. is exempt of any responsibility from the purchaser if, by the delivery date, the property shows some differences from those planes, images and animations in ornamental aspects and finishes with no concern to structural elements of the property.

The trendy Dinant.

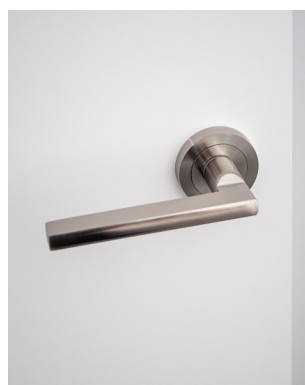
With a notably mediterranean design, Dinant brings the focus on the use of long-lasting materials and the highest quality finish. For this Property we rescue the terrazzo texture, combined with pure and neutral colors, adding also the best performance on taps, rest room units, closures and installations on an intelligent layout. Dinant reflects our effort on offering the best combination between space and trendy designs.





Long lasting materials.

Facade is composed by rendering mixed with natural stone, protecting the house from the weather and connecting with the environment.



Your home in depth. Specifications.

Your property is protected with an **alarm system totally fitted** that includes: sensors, touch panel, alarm centre (and siren). Also an armoured main entrance security door that has an elegant exterior grey touch and white interior. Smooth White colour is used on the plastic paint inside, Zenit from Niessen electric fittings and doors equipped with stainless Steel handlers.

It is included an **advanced domotic system** to manage different devices at your home

Indoor and outdoor flooring is a cement imitation porcelain stoneware.

Built in wardrobes on the bedrooms are finish with smooth sliding doors.

The sliding grey aluminium exteriors carpentry with tilt and turn system in bathrooms, includes also electric blinds of the same material and colour.



Air conditioning system with ducts pre installed.



Protection system in property through sensors in kitchen and bedrooms.





Kitchen finish. The return of Terrazzo.

Dinant stands out on the kitchen details, with a wide and elegant imitation terrazzo large format worktop, high performance material and great durability with no maintenance.



*White goods included.



Natural textures for functional spaces.

Here we can find a well-balanced, practical and real luxury space, with white melamine furniture and wood effect.

The 40 cm built in sink is completed with a GRB high pipe tap model Kala, emphasizing the spectacular integrated extraction hood and built in white goods on the lower covers.

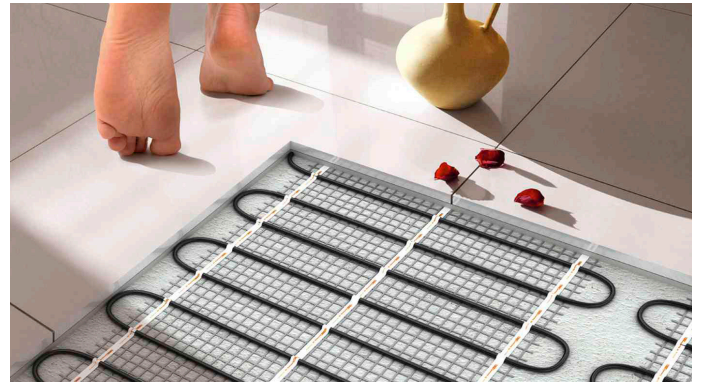
Make it your own with our customize department:
customercare@patrimi.com





Main Bathroom specifications.

60 by 30cm white mate tiling combining with Great scale imitation Terrazzo porcelain and Italian shower with grill. The shower comes equipped with an aluminium sliding shower screen, tap and spray fittings model SQUARE from GRB. A prominent imitation wood worktop sink unit with white drawers and long mirror, combined with our characteristic rectangular sink over worktop and GRB KALA mixing- tap.



***A pleasant underfloor heating in all bathrooms.**

Second and third bathrooms also important.

The secondary bathroom with white rectified 30x60 cm mate tiling and great scale imitation cement porcelain imitation on the wall and floor, combined with italian shower with grill. The shower comes with sliding aluminium screen and GRB SQUARE mixing-tap and sprayer.

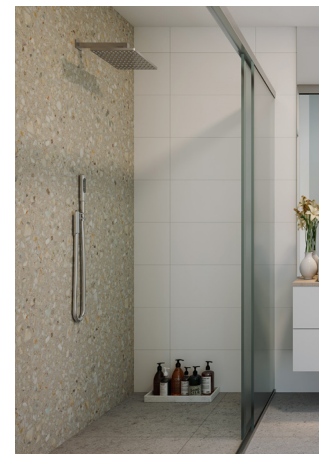
The wood-colored furniture stands out with the fantastic long horizontal mirror, finished with our countertop washbasin and our GRB KALA mixer.

Make it your own with our customize department:
customer-care@patrimi.com



Shower main bath.

Shower second baths.



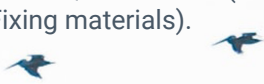
Technical specifications.

Structural system formed by pilars, beams and reinforced concrete slab, sized and calculated depending on geotechnical survey of the plot.

Rooftop.

Reinforced concrete on rooftop and terrace with integrated insulation, waterproof protection, which means low consumption, and CO2 low emissions.

1. Floor structure | 2. Waterproofing sheet | 3. Expanded polystyrene. | 4. Leveling mortar | 5. Gravel | 6. Terrace (Anti-Slip porcelanic floor and Fixing materials).



Structure.

7. Reticular concrete slab with integrated coffers. 8. Sanitary framing over concrete foundation lay and combination of footings and beams. 9. Foundations composed by footings and forged concrete beams.

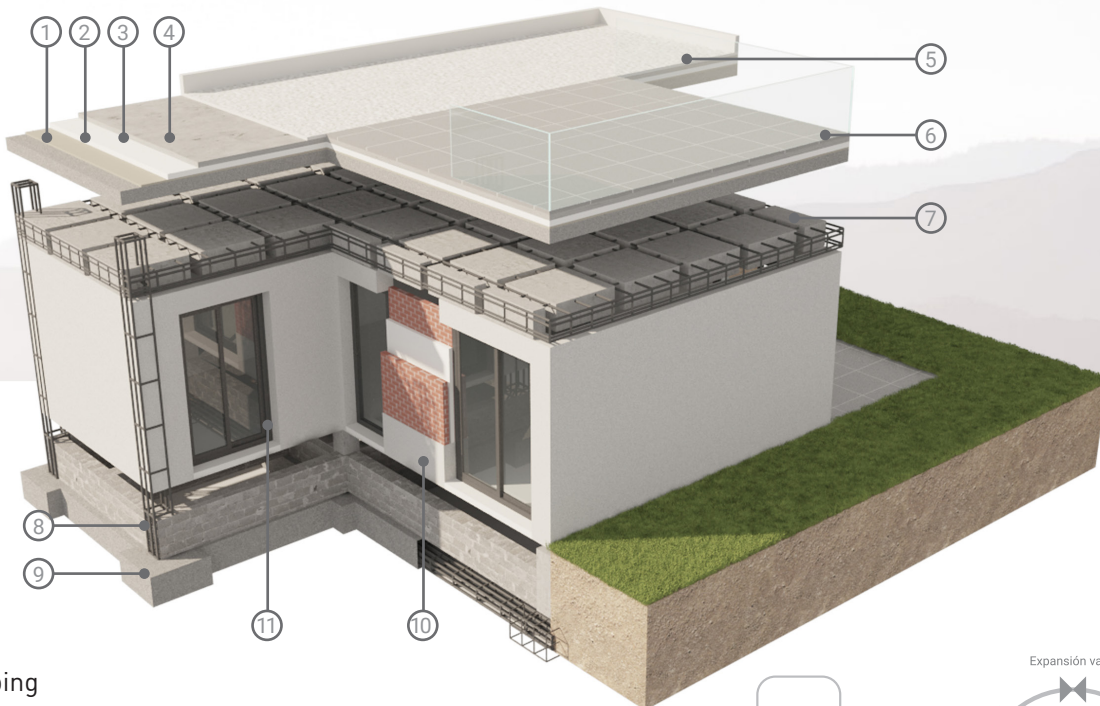


Rendering facade the integrated insulation.

10. Is composed by extruded polystyrene and, on the stone facade is composed by expanded polystyrene.

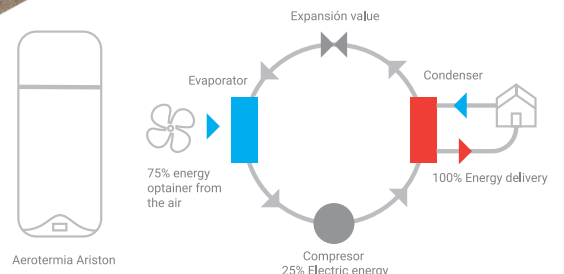
Double glazing.

11. Special double glazing including solar control, no UV or IR light radiation, lets the natural light to go in and saves energy. Aesthetic, colour and reflection improved.



Plumbing

The arothermal heating pump withdraws heat from the air through the evaporator then transfers it into a high temperature point through the condenser. All the plumbing is done with crossed-linked polyethylene pipes, which highly resists abrasion, corrosion, high temperatures and has high flexibility



Tailored design service, your made to measure Home.

In Patrimi Resorts we know that the purchase of your new home is such an important decision and that's why we focus on creating made to measure Homes, reflecting and strengthening the owners lifestyle

Our house customization service is ready to provide the best design and space according to the client's preferences and wishes, thanks to a dilated experience, professional service, enthusiasm and dedication from our team and collaborators that work with a common goal: Clients maximum satisfaction.

Free configuration service.
Customer Management service.
Interior design service.

Find us!

www.patrimi.com

You can make an appointment or a guided tour with your agent, through our website or by calling our main office:

La Finca Golf & Resort.
Crt. Algorfa- Los Montesinos, 3 Alicante
ESPAÑA

Customer Support:
+34 96 672 91 25
info@patrimi.com



2021

PATRIMI

Dinant. Building Specifications.

See more:

Villas Finestrat.

Salinas Bungalows.

Lagos Bungalows.

Villas ELE.

Villas Namur.

Apartments Loira III.

Apartments Soleil.

www.patrimi.com

customercare@patrimi.com