

LUXURY PROPERTIES

FINESTRAT - BENIDORM - COSTA BLANCA

*The data given in this brochure are approximate and for information only.

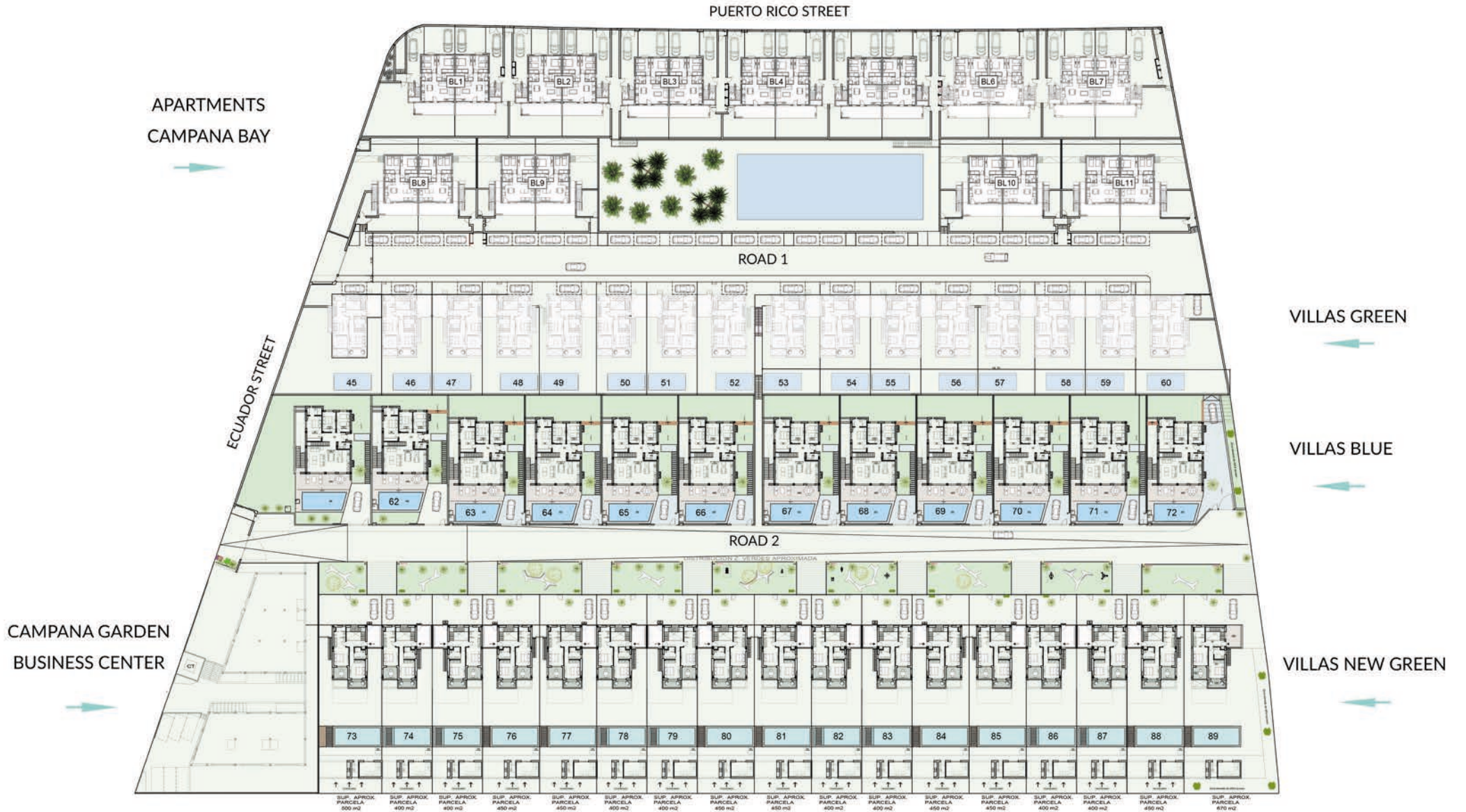


LOCATION MAP

Campana Garden - it's a luxury residential complex, located in Finestrat adjacent to Benidorm, surrounded by green areas, golf courses, magnificent sports facilities, close to the best beaches of Costa Blanca. Campana Garden is formed by several residential complexes. Contemporary design and architecture are combined in this luxury residential complex, which right down to the last detail respond to the strictest quality standards. Not only in the building materials but also in the finishes.



CAMPANA BAY - GENERAL PLAN












CAMPANA BAY RESIDENTIAL

VILLA NEW GREEN

The villa is built on two floors. On the ground floor, there is a bright living room, with large windows and direct access to the pool and garden, bedroom and bathroom. On the first floor, there are two suite rooms, with access to an open terrace. There is also private parking and a green area.

A guest house is built on the one floor, consisting of a bedroom and bathroom, besides this, there is a cosy terrace with access to the main villa, pool and garden.

-  3 BEDROOM
-  3 BATHROOM
-  PRIVATE PARKING
-  251,42 - 259,60 M2
-  PLOT 450 M2
-  POOL
-  GUEST HOUSE





TOTAL GUEST HOUSE AREA: 45,70 - 52,82 M2

-  GUEST HOUSE
-  BEDROOM
-  BATHROOM
-  BARBEQUE AREA



VILLAS NEW GREEN - GENERAL PLAN

 TOTAL BUILT:


251,42M2
(central dwellings)

259,60 M2
(lateral dwellings)

 TOTAL PLOT:

400 M2
(central dwellings)

450 M2
(lateral dwellings)

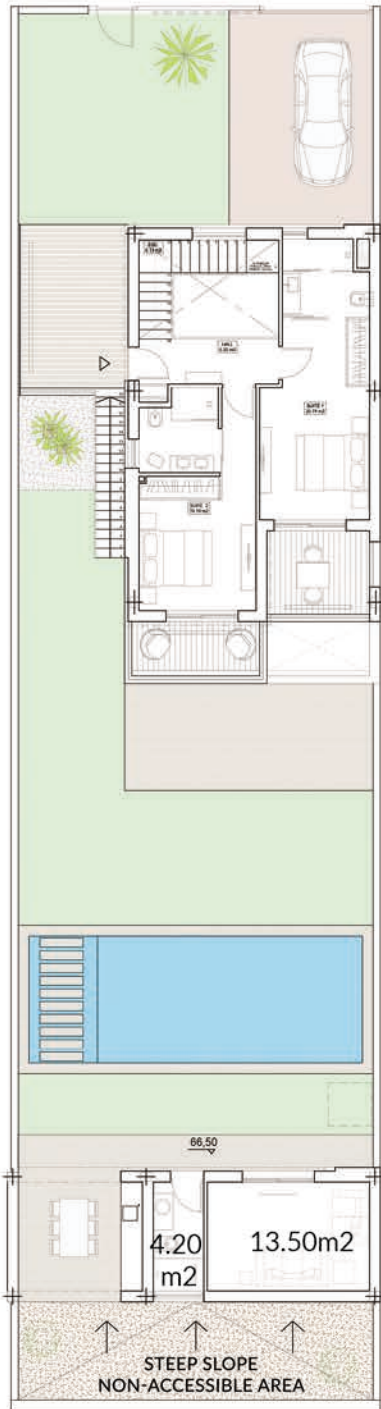
 POOL: 32 M2

 GUEST HOUSE

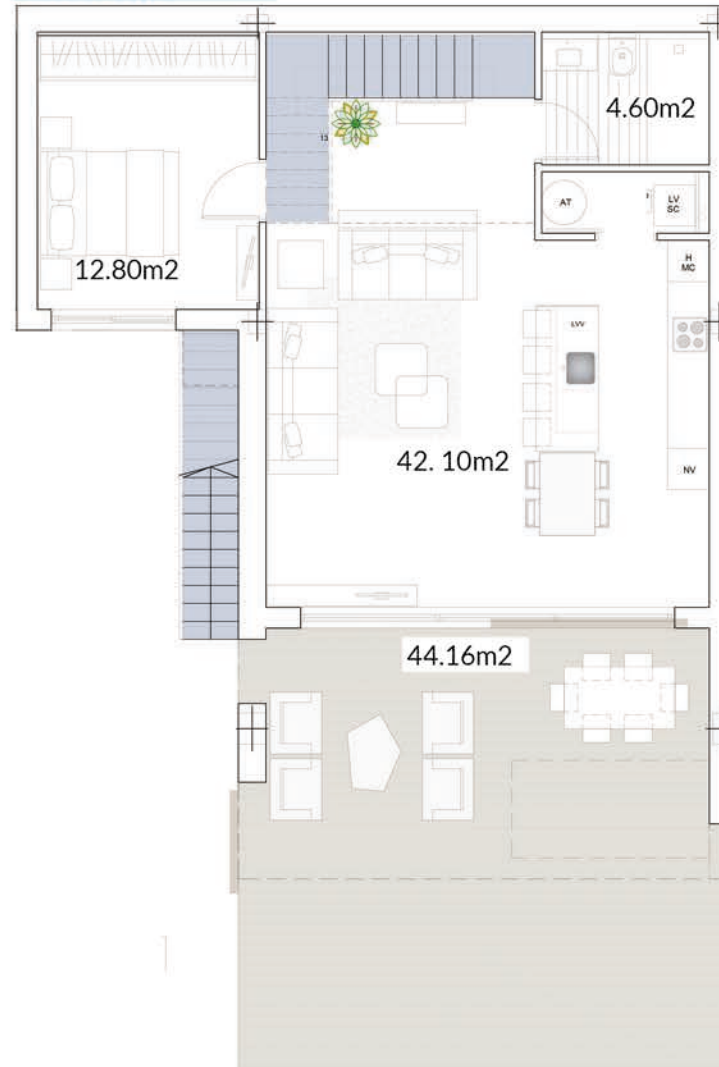
AREA TOTAL: 45,70 M2



VILLA NEW GREEN - CENTRAL DWELLING PLAN

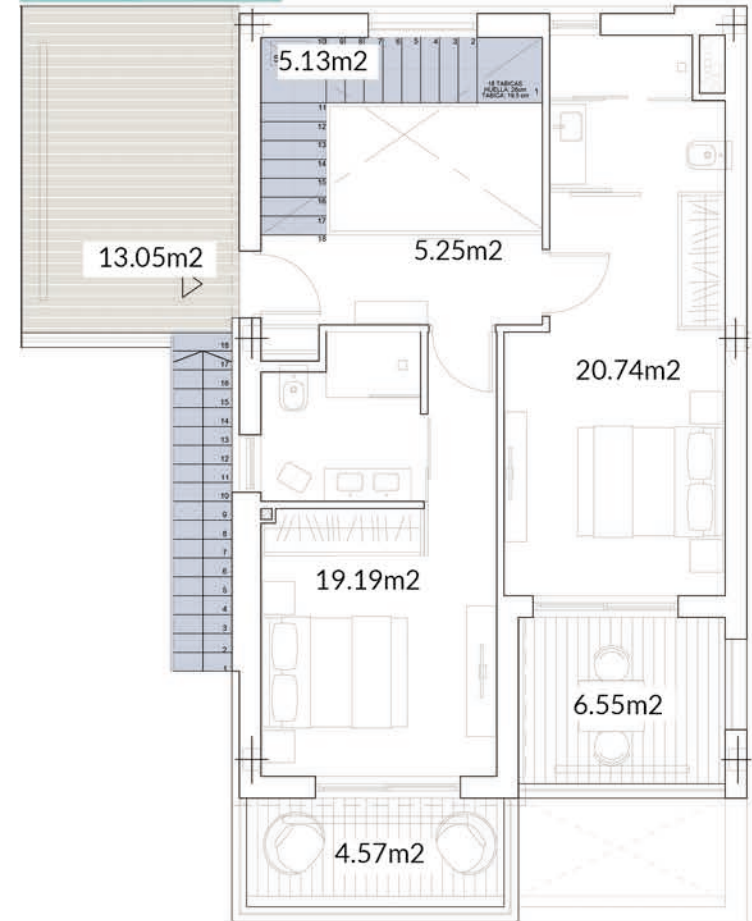


GROUND FLOOR



TOTAL GUEST HOUSE AREA: 45,70 M2
 GUEST HOUSE 24.50 M2
 TERRACE+BARBEQUE 21.20 M2

FIRST FLOOR

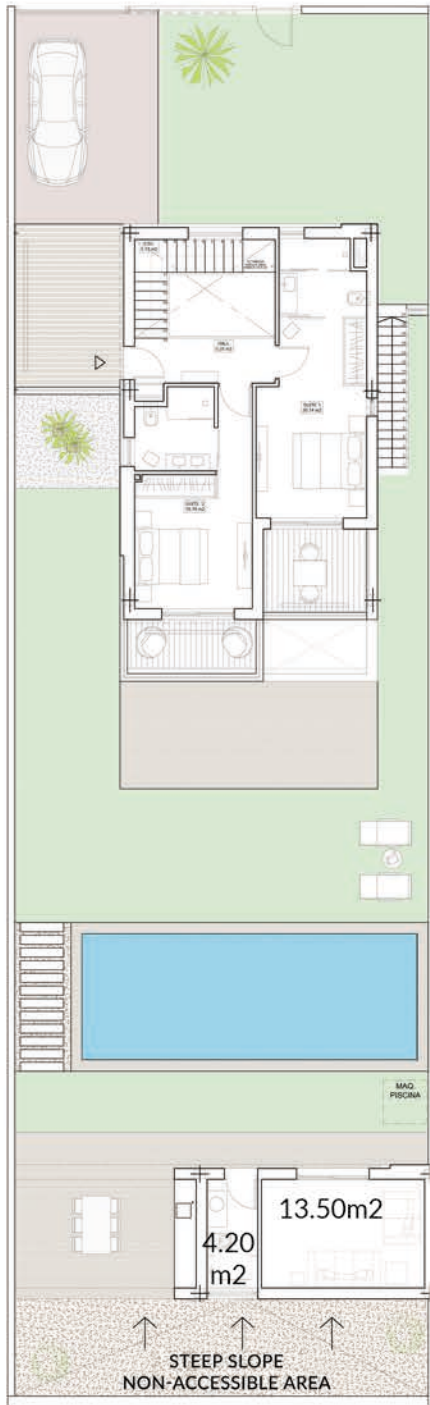


TOTAL GROUND FLOOR: 119,05 M2
 COVERED HOUSE 74.89 M2
 ACCESS & TERRACE 44.16 M2

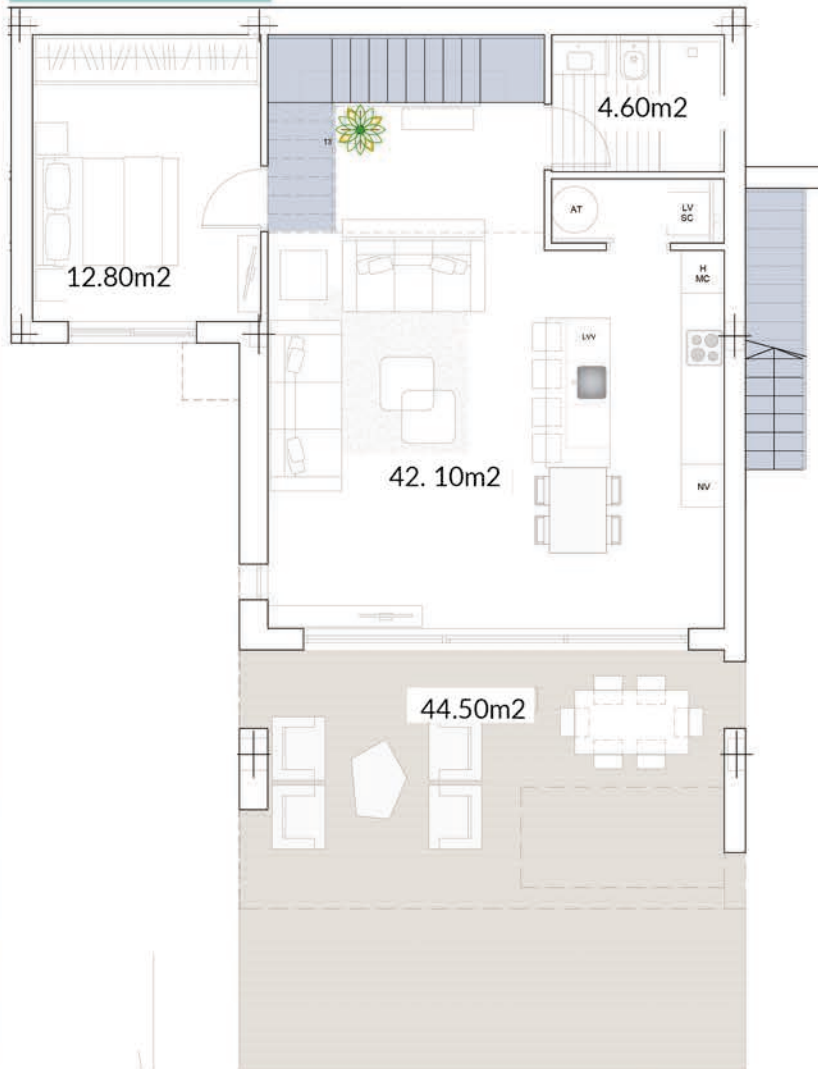
TOTAL FIRST FLOOR: 86,67 M2
 COVERED HOUSE 62.50 M2
 OPEN TERRACES 24.17 M2

TOTAL M2 BUILT: 251,42 M2

VILLA NEW GREEN - LATERAL DWELLING PLAN

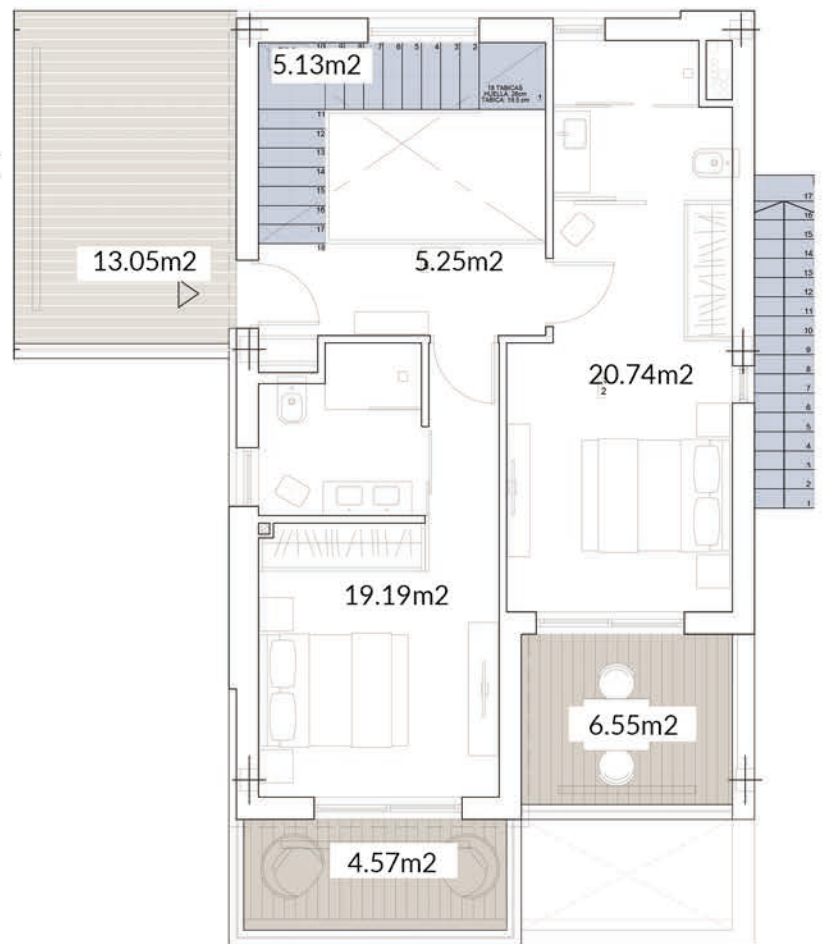


GROUND FLOOR



TOTAL GUEST HOUSE AREA: 52,82 M2
 GUEST HOUSE 24.50 M2
 TERRACE+BARBEQUE 28.32 M2

FIRST FLOOR



TOTAL GROUND FLOOR: 120,11 M2
 COVERED HOUSE 75.61 M2
 ACCESS & TERRACE 44.50 M2

TOTAL FIRST FLOOR: 86,67 M2
 COVERED HOUSE 62.50 M2
 OPEN TERRACES 24.17 M2

TOTAL M2 BUILT: 259,60 M2











CAMPANA BAY RESIDENTIAL

VILLA BLUE

Large modern villa with beautiful views, located in the Campana Bay Residential.

There are three spacious bedrooms, one of them suite, two bathrooms and a bright living-dining room with large windows and direct access to the pool and garden. This type of villa is built with a basement.

The design of this model is really unique and breaks all aesthetics of its surroundings.

-  3 BEDROOM
-  2 BATHROOM
-  PRIVATE PARKING
-  304,13 M2
-  PLOT 450 - 395 M2
-  SWIMMING POOL
-  SOLARIUM
-  INDOOR GARDEN WITH BASEMENT



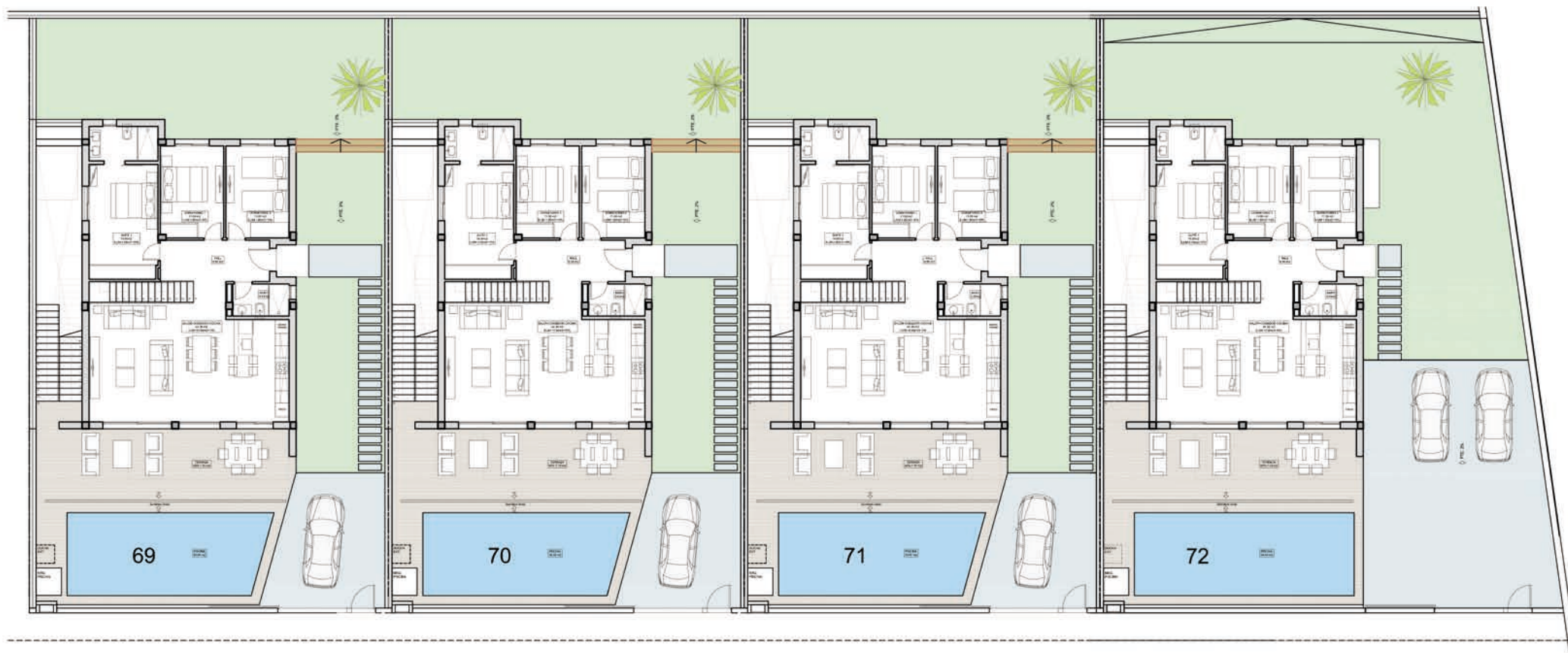
VILLAS BLUE- CAMPANA BAY

DWELLING - 69

DWELLING - 70

DWELLING - 71

DWELLING - 72



TOTAL BUILT: 304,13 M2

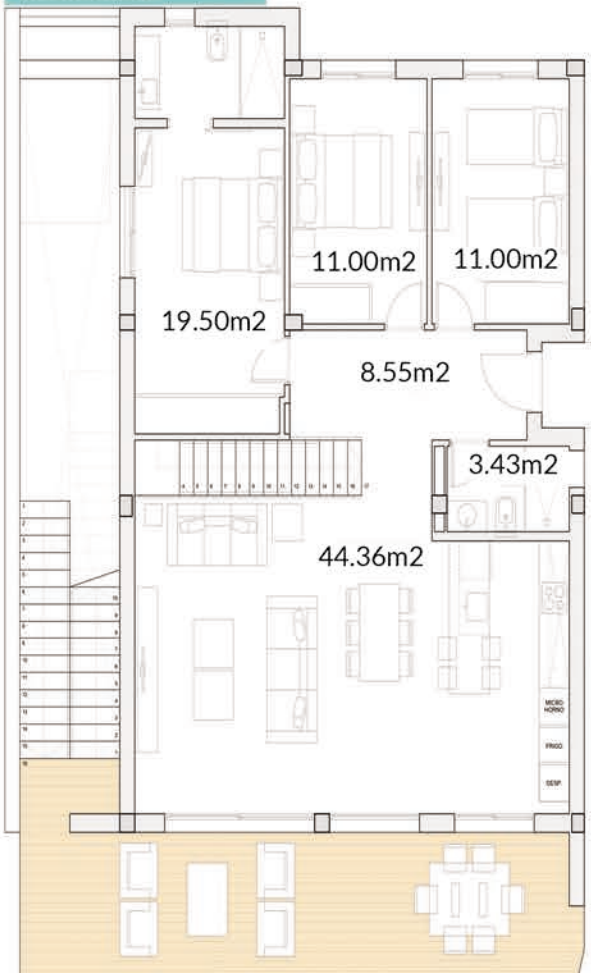
POOL: 30,60 M2

PLOT: 395 M2(dwelling 69-71)
470 M2(dwelling 72)

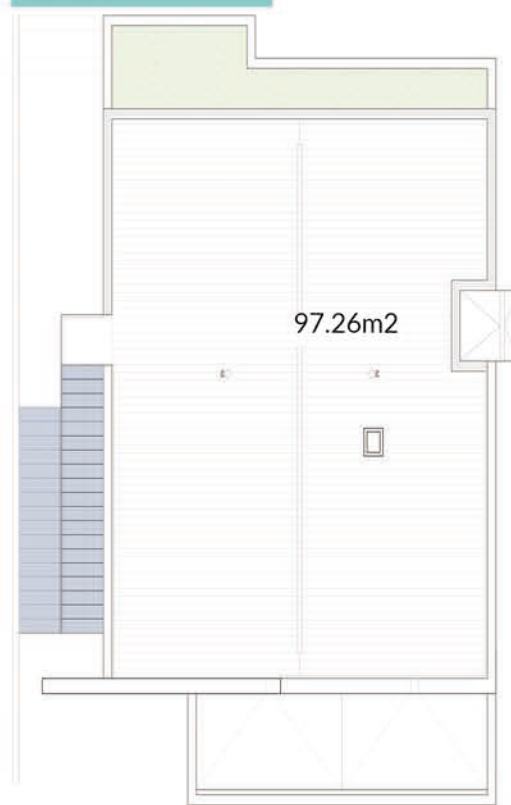
VILLA BLUE - DWELLING PLAN

COVERED HOUSE:	114.95 M2
ACCESS & TERRACE:	40.00 M2
TOTAL BASEMENT:	149.18 M2
TOTAL GROUND FLOOR:	304.13M2
TOTAL SOLARIUM:	108.88 M2

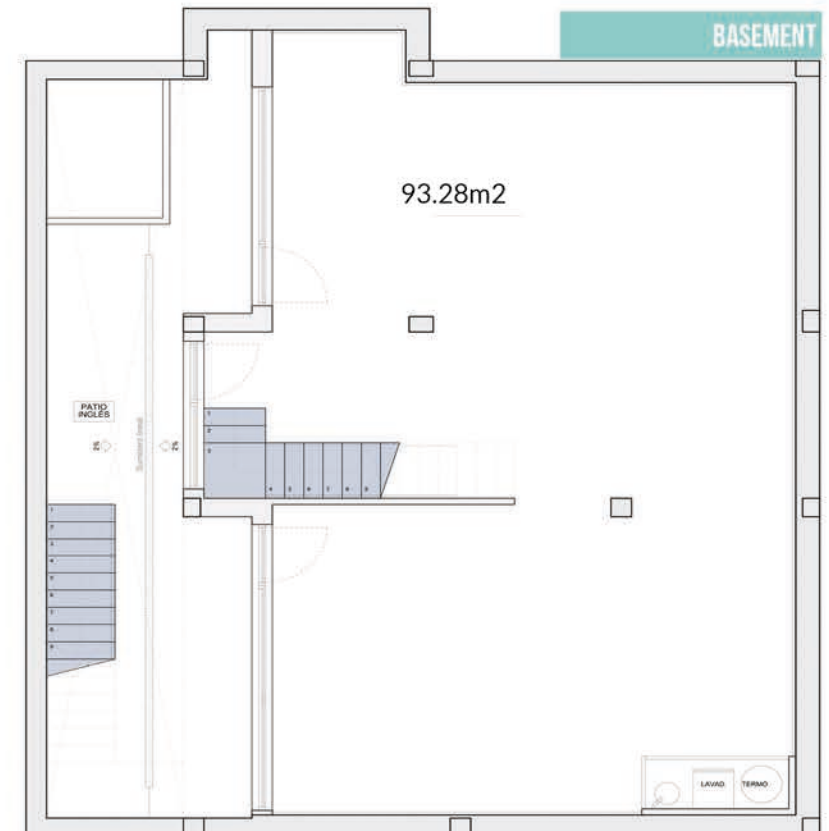
GROUND FLOOR



SOLARIUM



BASEMENT





BEACHES

Beaches like “Poniente” and “Levante” are two strips of golden sand, more than 6 km long, ideal for water sports and tan. Enjoy one of the most visited beaches in the Europe and the best in CostaBlanca.



LEISURE

Mundomar, Aqualandia and Terra Mitica are among the many theme parks in the area, where you can enjoy with your friends, family, couple and the most adventurous.



GOLF

Numerous professional golf courses very close to Campana Garden. Some of them are Sierra Cortina Pich & Pat, Villaitana Golf, Las Rejas Pich & Pat, ... Enjoy one of the most rewarding sports in the area.



HIKING AND NATURE



Puig Campana (Finestrat) - second highest mountain of Alicante with amazing views from the top. And Sierra Helada (Benidorm) is a large mountain formed mostly by limestone and at night, when the moon reflects on it, it looks like ice.



GET IN TOUCH:

www.campanagarden.com
info@campanagarden.com
+34 670 37 89 82

GET CONNECTED:

 [@campanagarden](https://www.instagram.com/campanagarden)
 [@campanagardenproperties](https://www.facebook.com/campanagardenproperties)