



# ISEA

ESTEPONA



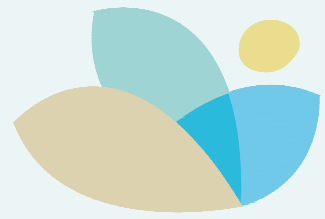
Ground Floor. Blocks A&B  
Planta Baja. Bloque A&B.



DEVELOPER: QIP ARROYO ENMEDIO R5, S.L.U, Calle Periodista Pirula Arderius n 4 - 03001 Alicante B-42612861

NOTE: This plan is provisional and subject to any changes that may arise from licensing requirements or technical management criteria, without compromising quality. The furniture and household items that appear in the plan, including furniture, wardrobes and appliances, are merely for decorative purposes and are not included in the apartment. The location of the bathroom fixtures may vary slightly depending on the final assembly. The imperative determinations of the Project or by implications works of the execution, can change the exact position of the facade of doors and windows, as well the surface area may also be increased or even decrease not more than a 10%. This is a non-contractual document.

SALES & INFORMATION  
**+34 690 000 444**  
**iseaestepona.com**



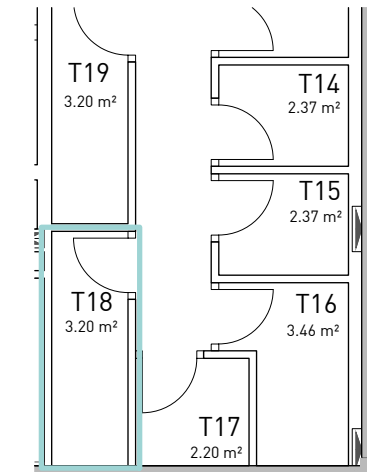
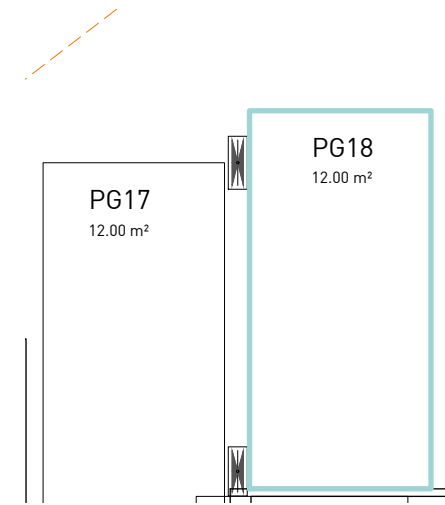
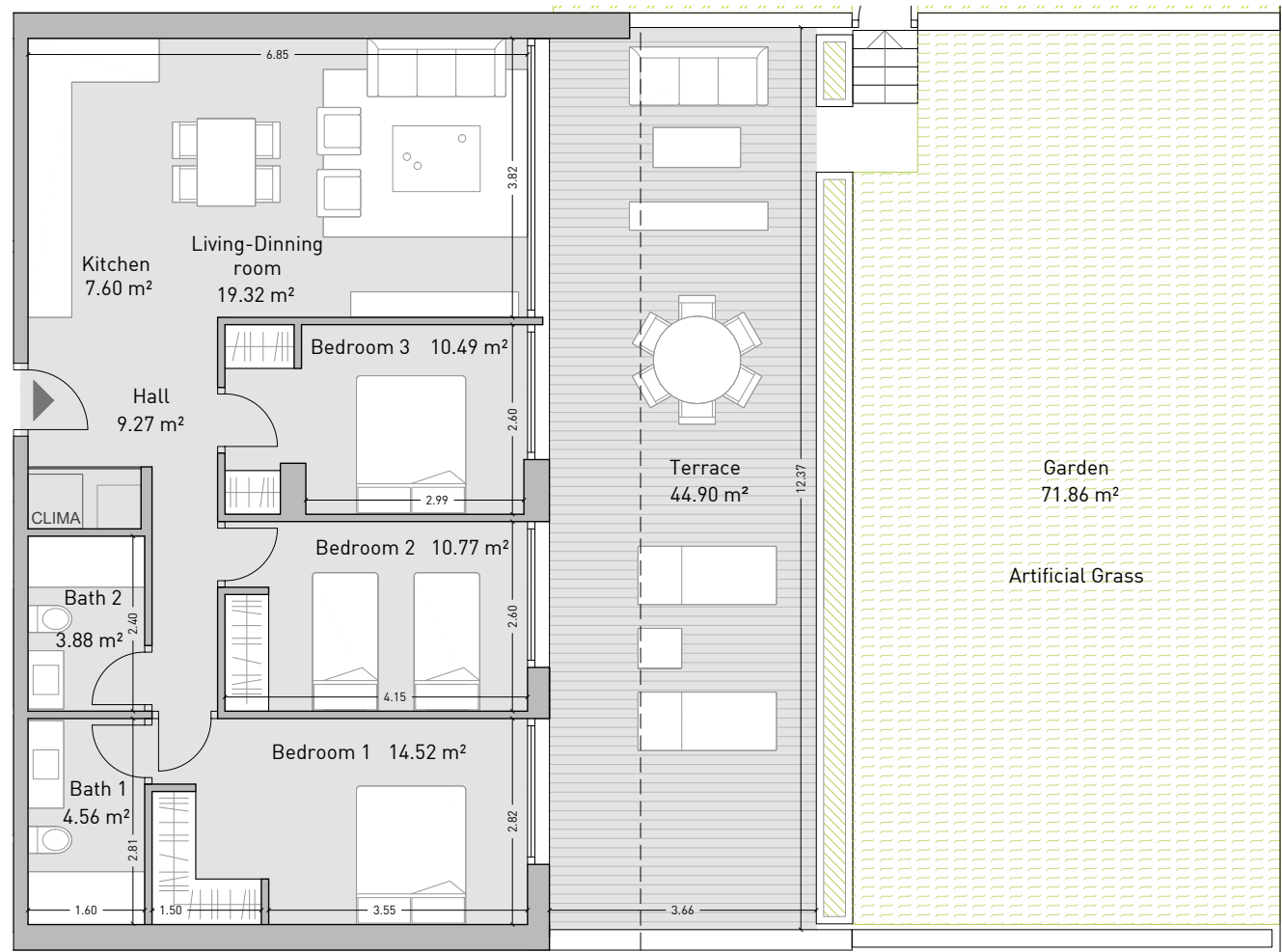
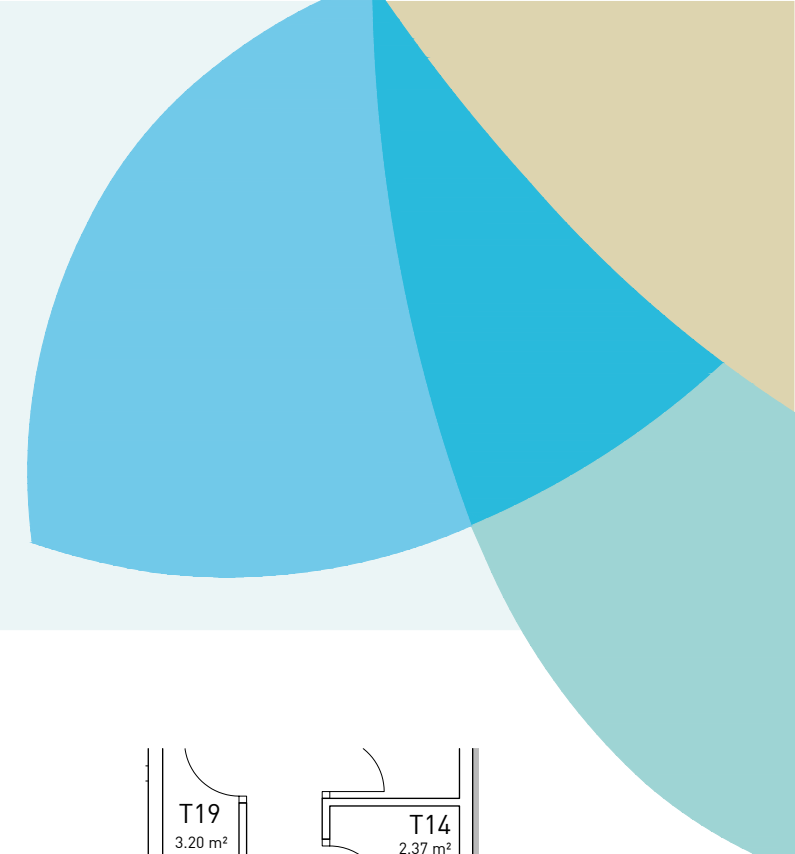
**ISEA**  
ESTEPONA

# Apartment 0.2

Vivienda

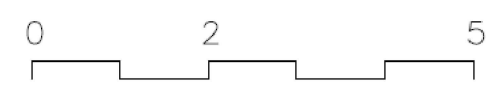
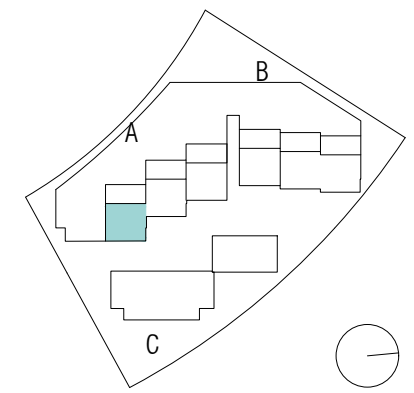
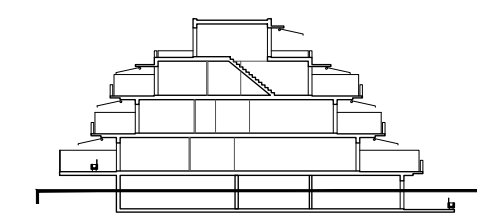
Garden floor. Block A  
Planta Jardín. Bloque A

Enclosed Built Area Sup. Construida Cerrada	92,09 sqm.
Terrace Built Area Sup. Construida Terraza	52,70 sqm.
Common Areas Built Area Sup. Construida Zona Común	105,59 sqm.
Usable Area Sup. útil vivienda	80,41 sqm.
Usable Area (Decreto 218/2015) Sup. útil vivienda (Decreto 218/2015)	95,61 sqm.



Garage and storage room  
Plaza de garaje y trastero

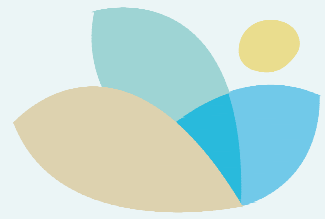
Building / Edificio A



DEVELOPER: QIP ARROYO ENMEDIO R5, S.L.U, Calle Periodista Pirula Arderius n 4 - 03001 Alicante B-42612861

NOTE: This plan is provisional and subject to any changes that may arise from licensing requirements or technical management criteria, without compromising quality. The furniture and household items that appear in the plan, including kitchen furniture, wardrobes and appliances, are merely for decorative purposes and are not included in the apartment. The location of the bathroom fixtures may vary slightly depending on the final assembly. The imperative determinations of the Executive Project or by implications works of the execution, can change the exact position of the facade of doors and windows, as well the surface area may also be increased or even decrease not more than a 10%. This is a non-contractual document.

**SALES & INFORMATION**  
**+34 690 000 444**  
**iseaestepona.com**



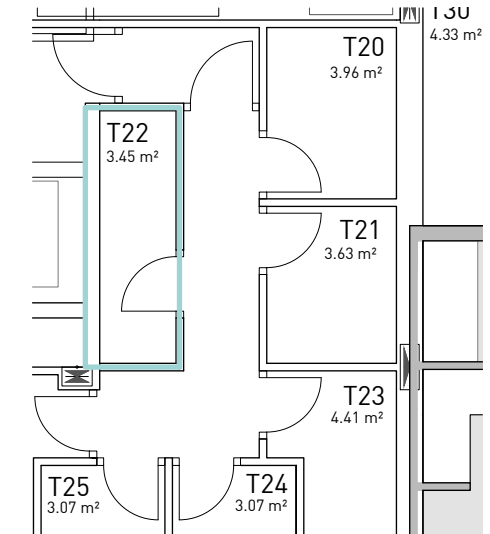
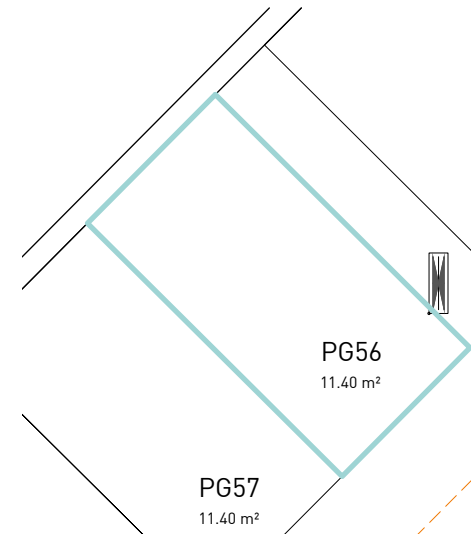
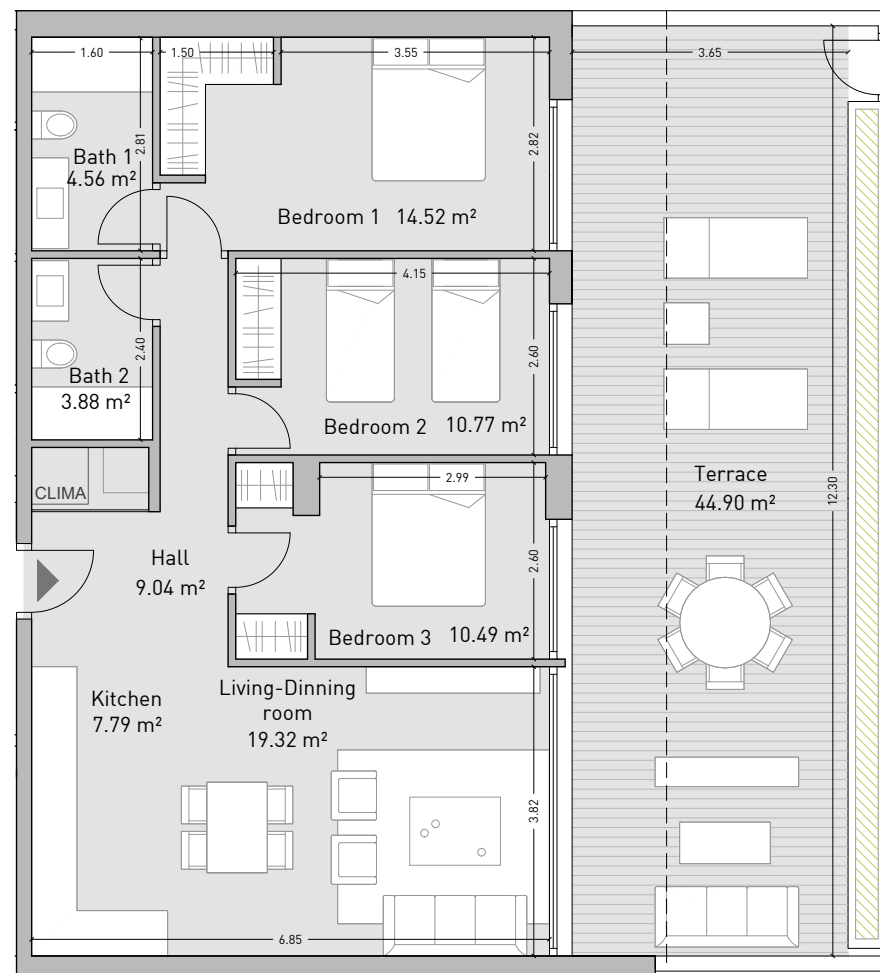
**ISEA**  
ESTEPONA

# Apartment 0.3

Vivienda

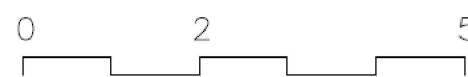
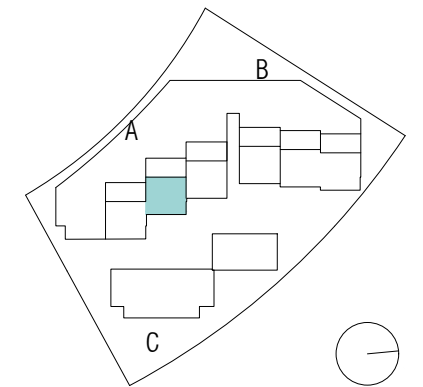
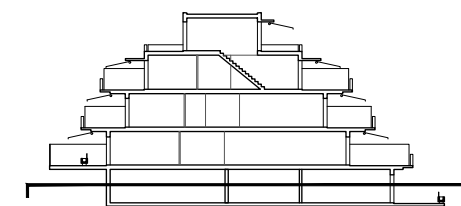
Garden floor. Block A  
Planta Jardín. Bloque A

Enclosed Built Area Sup. Construida Cerrada	91,64 sqm.
Terrace Built Area Sup. Construida Terraza	51,88 sqm.
Common Areas Built Area Sup. Construida Zona Común	105,07 sqm.
Usable Area Sup. útil vivienda	80,37 sqm.
Usable Area (Decreto 218/2015) Sup. útil vivienda (Decreto 218/2015)	95,22 sqm.



Garage and storage room  
Plaza de garaje y trastero

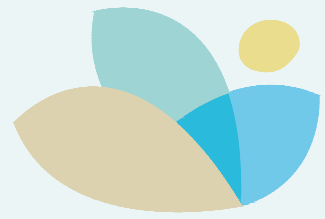
Building / Edificio A



DEVELOPER: QIP ARROYO ENMEDIO R5, S.L.U, Calle Periodista Pirula Arderius n 4 - 03001 Alicante B-42612861

NOTE: This plan is provisional and subject to any changes that may arise from licensing requirements or technical management criteria, without compromising quality. The furniture and household items that appear in the plan, including kitchen furniture, wardrobes and appliances, are merely for decorative purposes and are not included in the apartment. The location of the bathroom fixtures may vary slightly depending on the final assembly. The imperative determinations of the Executive Project or by implications works of the execution, can change the exact position of the facade of doors and windows, as well the surface area may also be increased or even decrease not more than a 10%. This is a non-contractual document.

**SALES & INFORMATION**  
**+34 690 000 444**  
**iseaestepona.com**



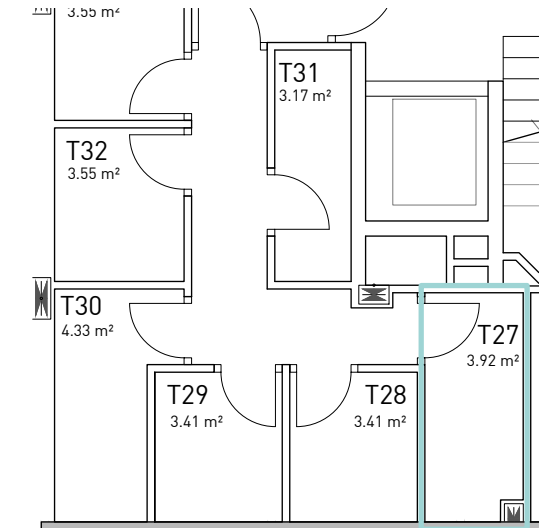
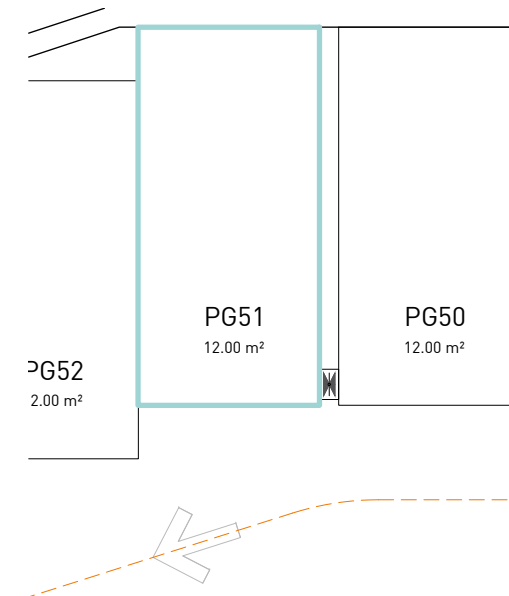
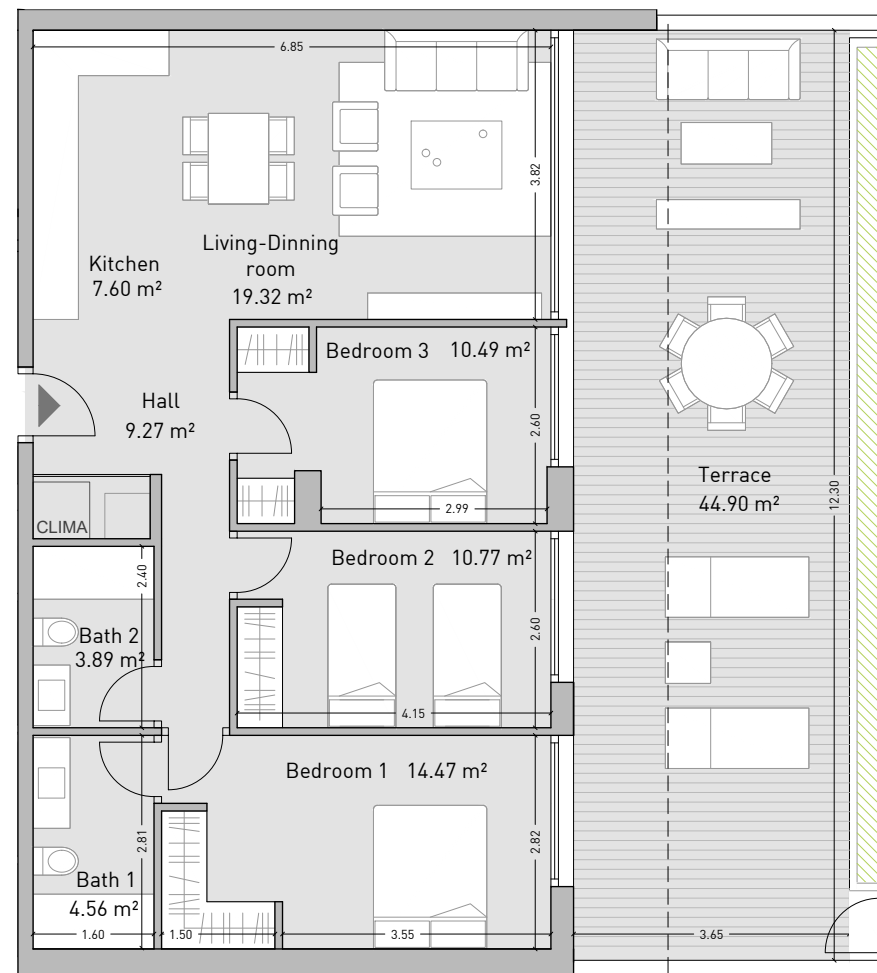
**ISEA**  
ESTEPONA

# Apartment 0.4

Vivienda

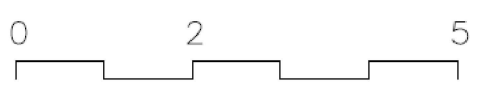
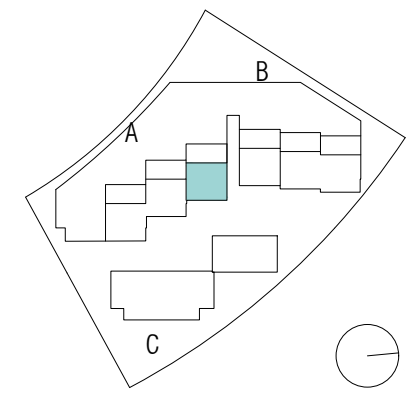
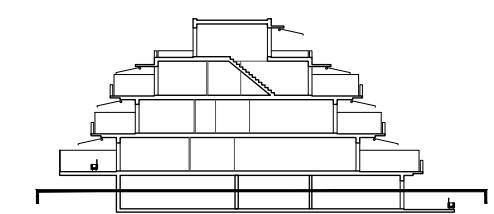
Garden floor. Block A  
Planta Jardín. Bloque A

Enclosed Built Area Sup. Construida Cerrada	92,09 sqm.
Terrace Built Area Sup. Construida Terraza	51,88 sqm.
Common Areas Built Area Sup. Construida Zona Común	105,59 sqm.
Usable Area Sup. útil vivienda	80,37 sqm.
Usable Area (Decreto 218/2015) Sup. útil vivienda (Decreto 218/2015)	96,29 sqm.



Garage and storage room  
Plaza de garaje y trastero

Building / Edificio A



DEVELOPER: QIP ARROYO ENMEDIO R5, S.L.U, Calle Periodista Pirula Arderius n 4 - 03001 Alicante B-42612861

NOTE: This plan is provisional and subject to any changes that may arise from licensing requirements or technical management criteria, without compromising quality. The furniture and household items that appear in the plan, including kitchen furniture, wardrobes and appliances, are merely for decorative purposes and are not included in the apartment. The location of the bathroom fixtures may vary slightly depending on the final assembly. The imperative determinations of the Executive Project or by implications works of the execution, can change the exact position of the facade of doors and windows, as well the surface area may also be increased or even decrease not more than a 10%. This is a non-contractual document.

**SALES & INFORMATION**  
**+34 690 000 444**  
**iseaestepona.com**



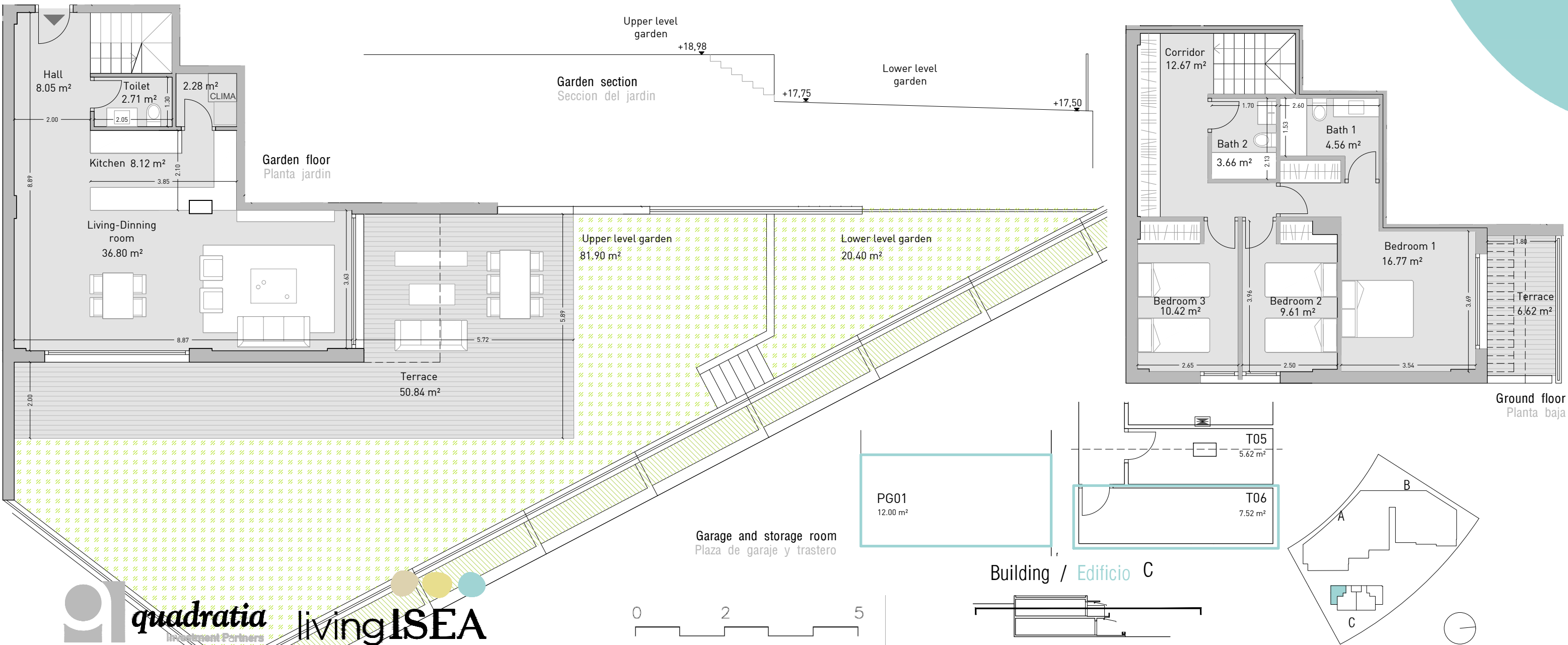
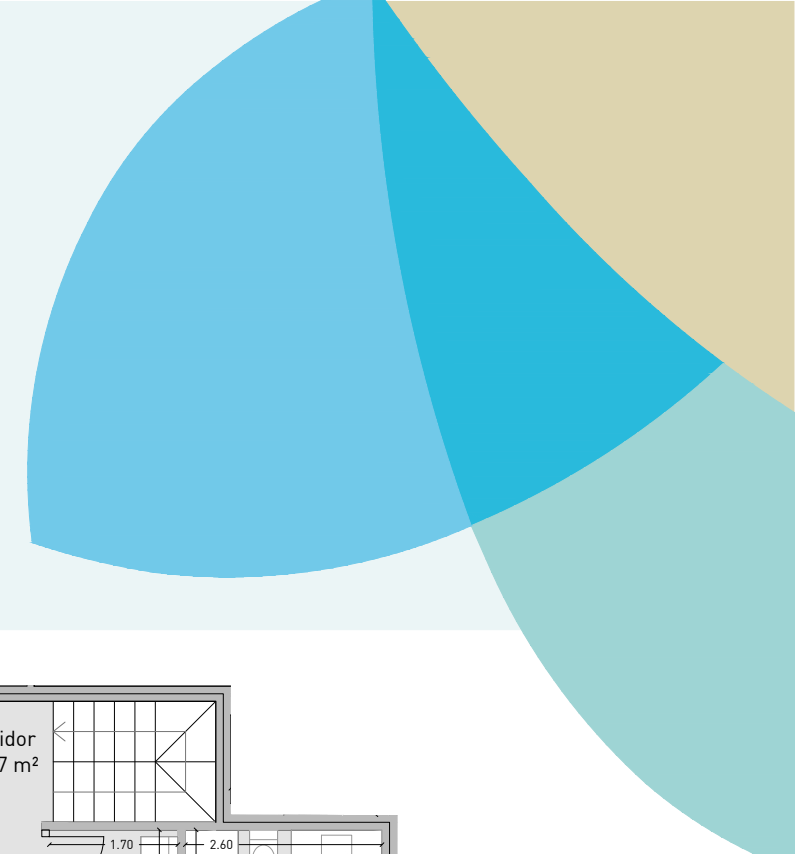
**ISEA**  
ESTEPONA

# Apartment 0.8A

Vivienda

Garden & Ground floor. Block C  
Planta Jardín & Baja. Bloque C

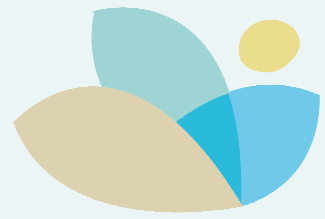
Enclosed Built Area Sup. Construida Cerrada	137,04 sqm.
Terrace Built Area Sup. Construida Terraza	58,56 sqm.
Common Areas Built Area Sup. Construida Zona Común	157,13 sqm.
Usable Area Sup. útil vivienda	115,65 sqm.
Usable Area (Decreto 218/2015) Sup. útil vivienda (Decreto 218/2015)	135,17 sqm.



DEVELOPER: QIP ARROYO ENMEDIO R5, S.L.U, Calle Periodista Pirula Arderius n 4 - 03001 Alicante B-42612861

NOTE: This plan is provisional and subject to any changes that may arise from licensing requirements or technical management criteria, without compromising quality. The furniture and household items that appear in the plan, including kitchen furniture, wardrobes and appliances, are merely for decorative purposes and are not included in the apartment. The location of the bathroom fixtures may vary slightly depending on the final assembly. The imperative determinations of the Executive Project or by implications works of the execution, can change the exact position of the facade of doors and windows, as well the surface area may also be increased or even decrease not more than a 10%. This is a non-contractual document.

**SALES & INFORMATION**  
**+34 690 000 444**  
**iseaestepona.com**



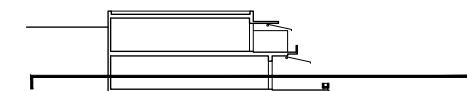
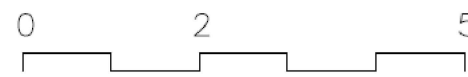
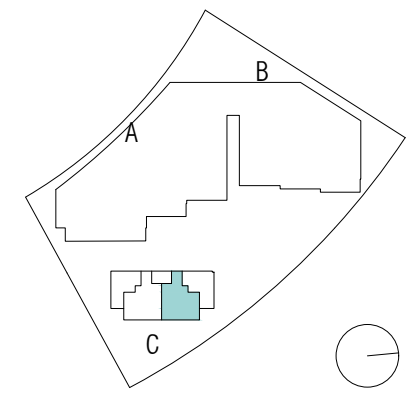
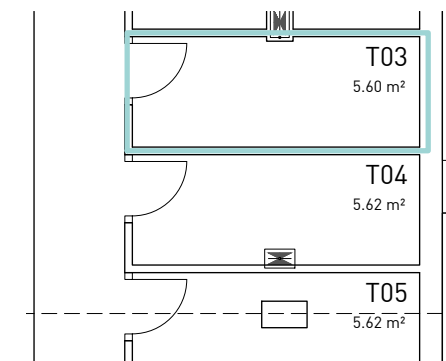
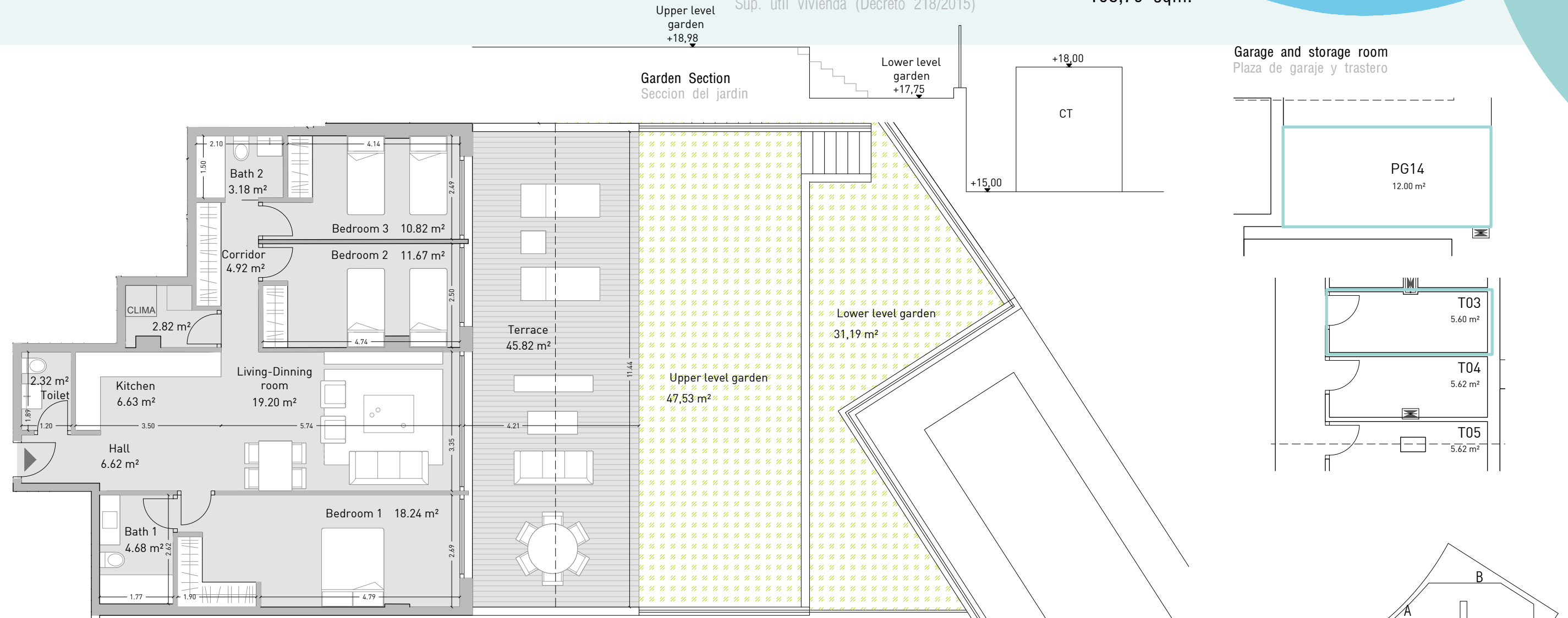
**ISEA**  
ESTEPONA

# Apartment 0.8C

Vivienda

Garden floor. Block C  
Planta Jardín. Bloque C

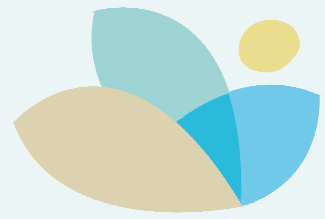
Enclosed Built Area Sup. Construida Cerrada	102,34 sqm.
Terrace Built Area Sup. Construida Terraza	46,98 sqm.
Common Areas Built Area Sup. Construida Zona Común	117,34 sqm.
Usable Area Sup. útil vivienda	91,10 sqm.
Usable Area (Decreto 218/2015) Sup. útil vivienda (Decreto 218/2015)	108,70 sqm.



DEVELOPER: QIP ARROYO ENMEDIO R5, S.L.U, Calle Periodista Pirula Arderius n 4 - 03001 Alicante B-42612861

NOTE: This plan is provisional and subject to any changes that may arise from licensing requirements or technical management criteria, without compromising quality. The furniture and household items that appear in the plan, including kitchen furniture, wardrobes and appliances, are merely for decorative purposes and are not included in the apartment. The location of the bathroom fixtures may vary slightly depending on the final assembly. The imperative determinations of the Executive Project or by implications works of the execution, can change the exact position of the facade of doors and windows, as well the surface area may also be increased or even decrease not more than a 10%. This is a non-contractual document.

**SALES & INFORMATION**  
**+34 690 000 444**  
**iseaestepona.com**



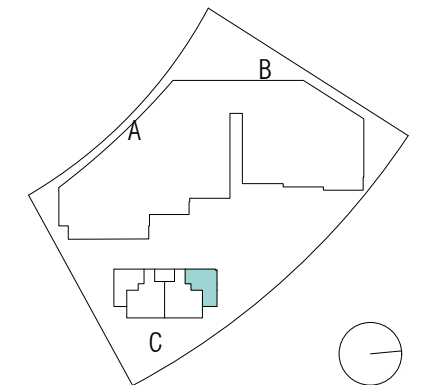
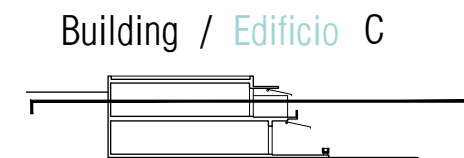
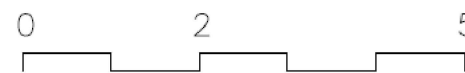
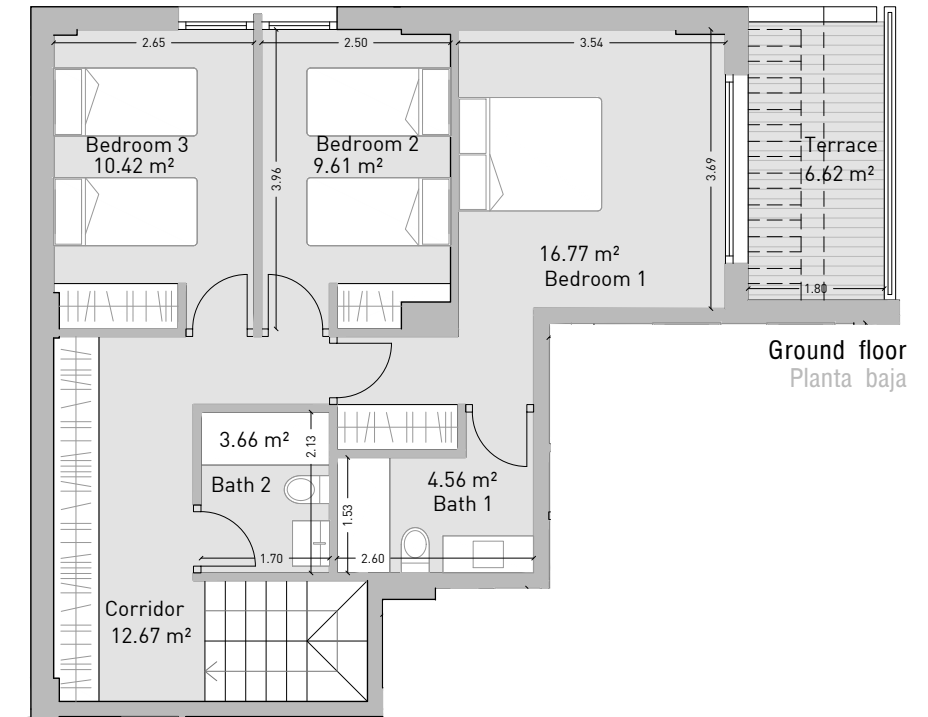
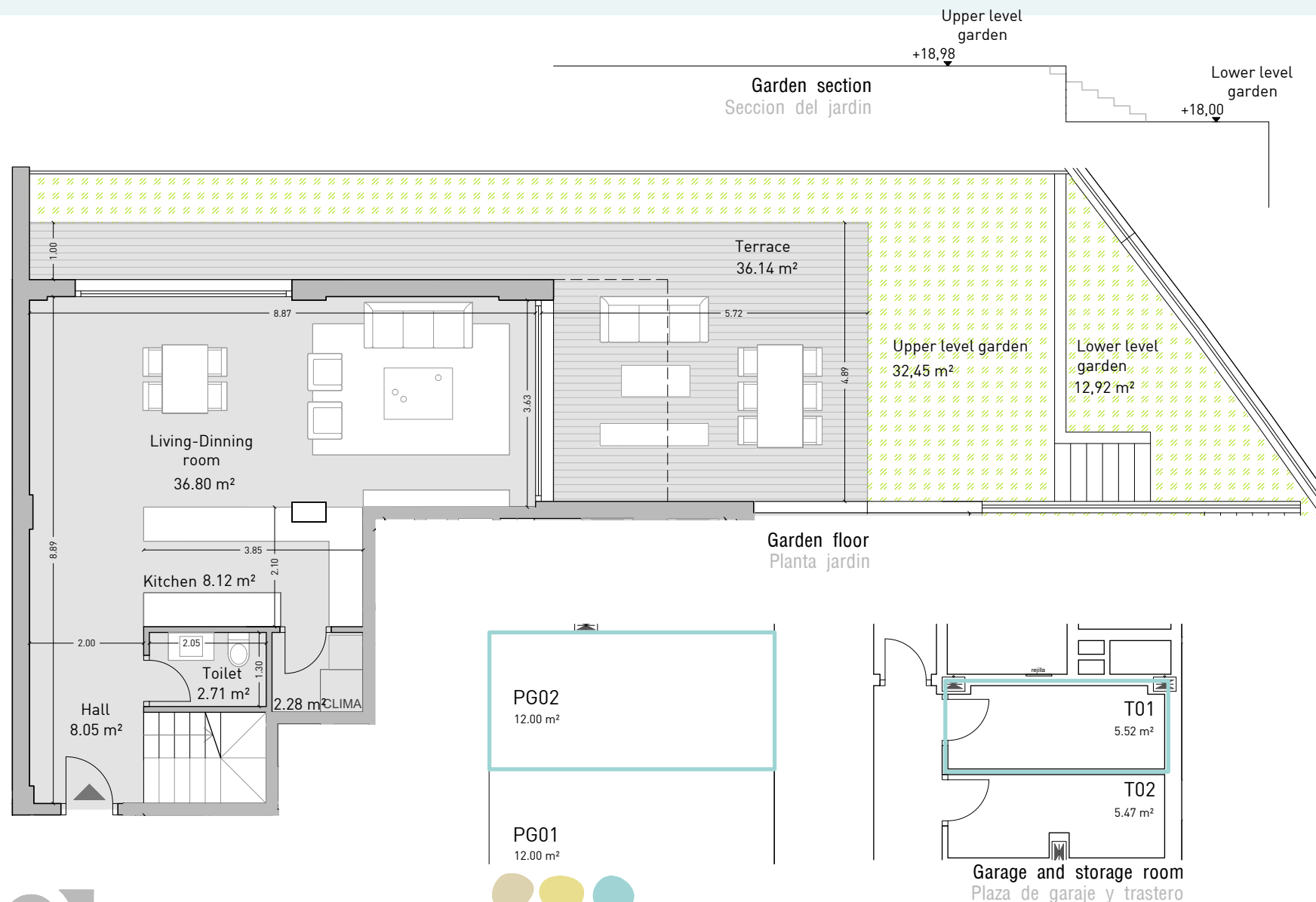
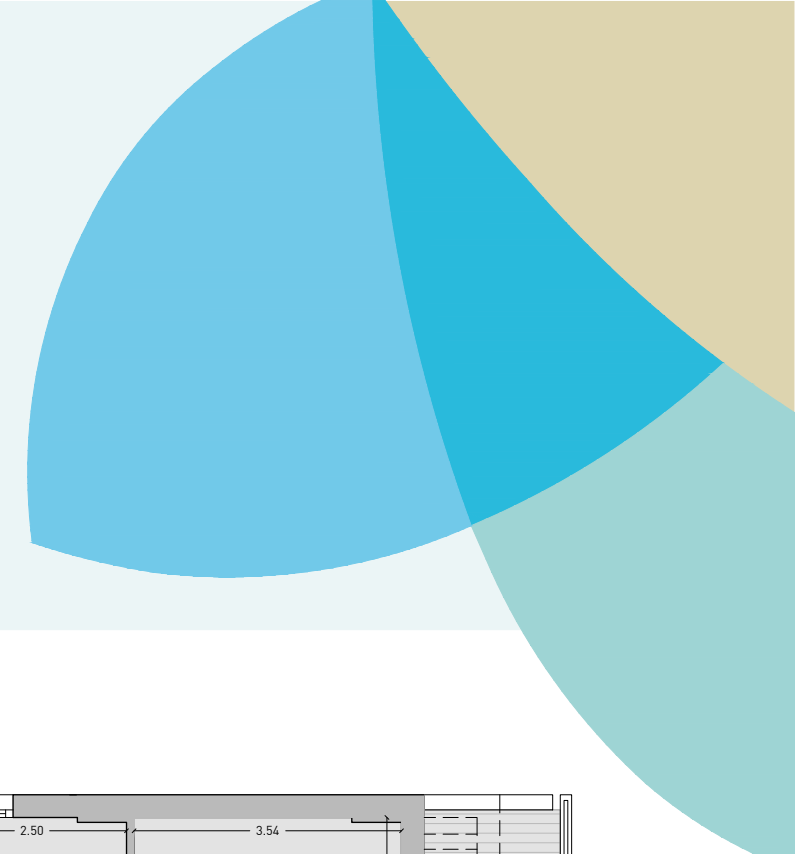
**ISEA**  
ESTEPONA

# Apartment 0.8D

Vivienda

Garden & Ground floor. Block C  
Planta Jardín & Baja. Bloque C

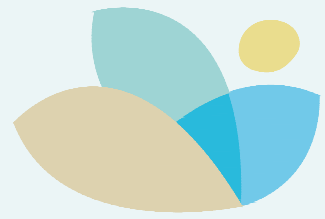
Enclosed Built Area Sup. Construida Cerrada	138,76 sqm.
Terrace Built Area Sup. Construida Terraza	43,85 sqm.
Common Areas Built Area Sup. Construida Zona Común	157,13 sqm.
Usable Area Sup. útil vivienda	115,65 sqm.
Usable Area (Decreto 218/2015) Sup. útil vivienda (Decreto 218/2015)	133,17 sqm.



DEVELOPER: QIP ARROYO ENMEDIO R5, S.L.U, Calle Periodista Pirula Arderius n 4 - 03001 Alicante B-42612861

NOTE: This plan is provisional and subject to any changes that may arise from licensing requirements or technical management criteria, without compromising quality. The furniture and household items that appear in the plan, including kitchen furniture, wardrobes and appliances, are merely for decorative purposes and are not included in the apartment. The location of the bathroom fixtures may vary slightly depending on the final assembly. The imperative determinations of the Executive Project or by implications works of the execution, can change the exact position of the facade of doors and windows, as well the surface area may also be increased or even decrease not more than a 10%. This is a non-contractual document.

**SALES & INFORMATION**  
**+34 690 000 444**  
**iseaestepona.com**



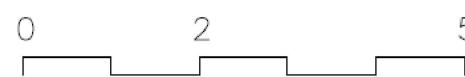
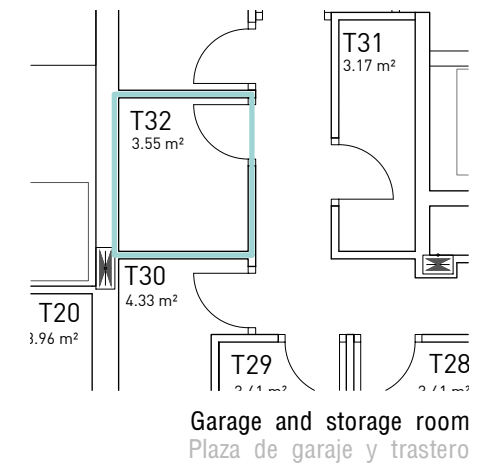
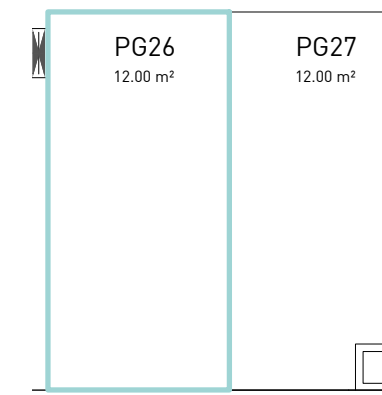
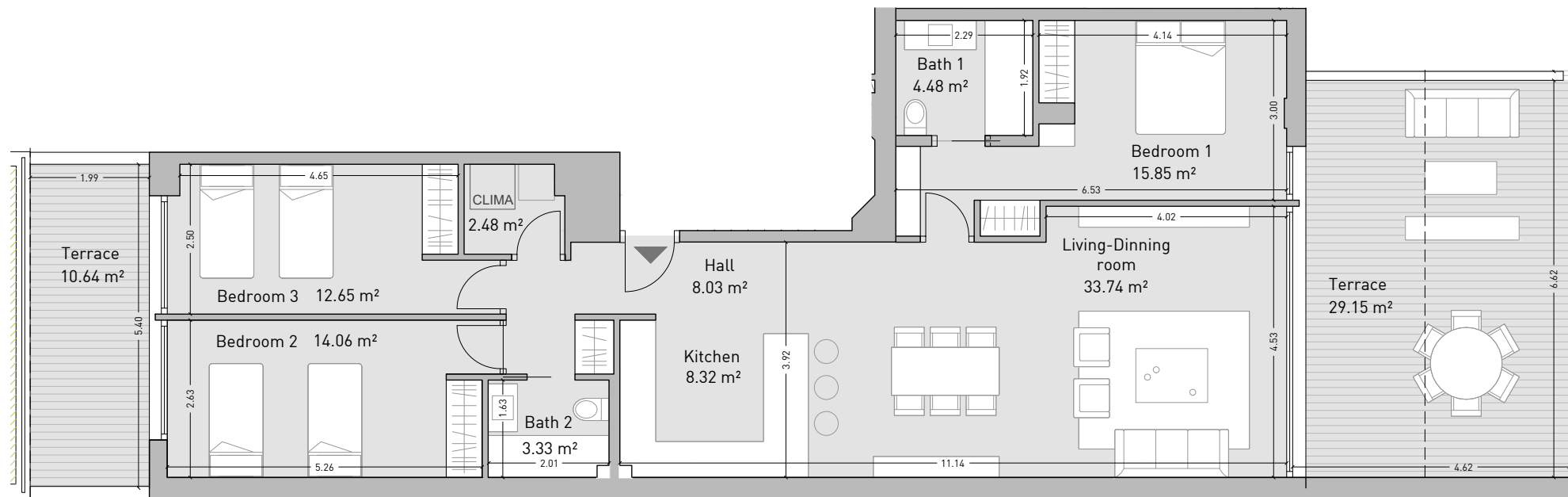
**ISEA**  
ESTEPONA

# Apartment 1.4A

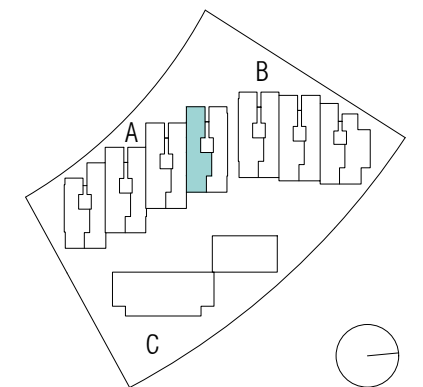
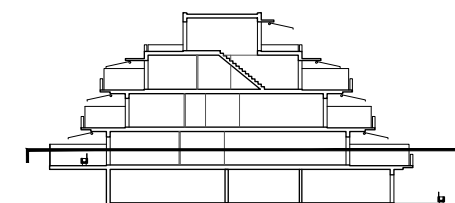
Vivienda

Ground floor. Block A  
Planta Baja. Bloque A

Enclosed Built Area Sup. Construida Cerrada	117,43 sqm.
Terrace Built Area Sup. Construida Terraza	42,34 sqm.
Common Areas Built Area Sup. Construida Zona Común	134,64 sqm.
Usable Area Sup. útil vivienda	102,94 sqm.
Usable Area (Decreto 218/2015) Sup. útil vivienda (Decreto 218/2015)	118,49 sqm.



Building / Edificio A



DEVELOPER: QIP ARROYO ENMEDIO R5, S.L.U, Calle Periodista Pirula Arderius n 4 - 03001 Alicante B-42612861

NOTE: This plan is provisional and subject to any changes that may arise from licensing requirements or technical management criteria, without compromising quality. The furniture and household items that appear in the plan, including kitchen furniture, wardrobes and appliances, are merely for decorative purposes and are not included in the apartment. The location of the bathroom fixtures may vary slightly depending on the final assembly. The imperative determinations of the Executive Project or by implications works of the execution, can change the exact position of the facade of doors and windows, as well the surface area may also be increased or even decrease not more than a 10%. This is a non-contractual document.

**SALES & INFORMATION**  
**+34 690 000 444**  
**iseaestepona.com**





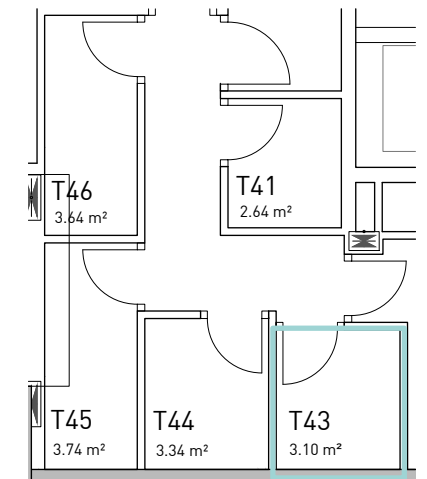
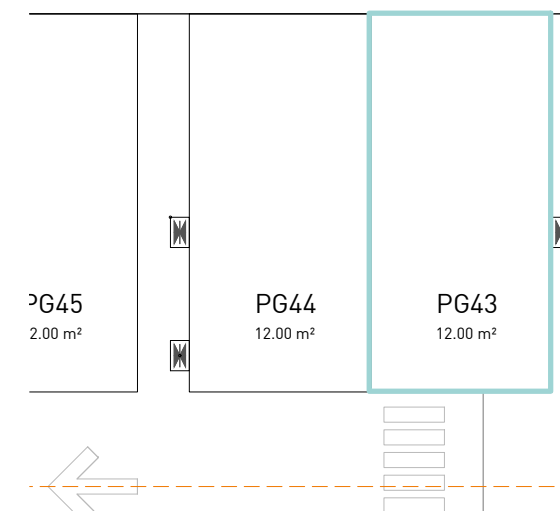
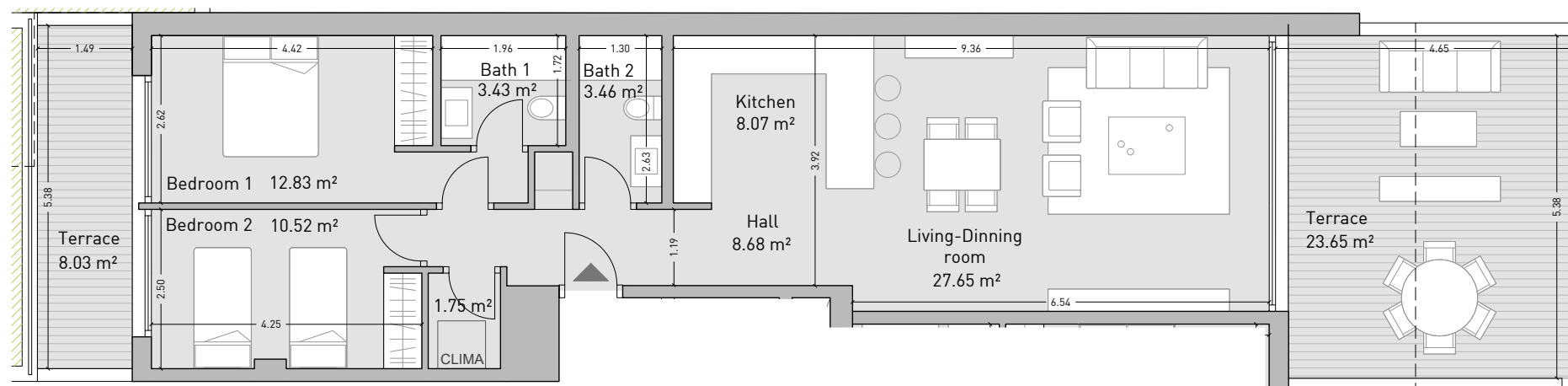
**ISEA**  
ESTEPONA

# Apartment 1.6B

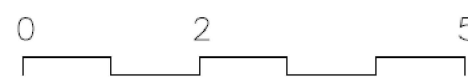
Vivienda

Ground floor. Block B  
Planta Baja. Bloque B

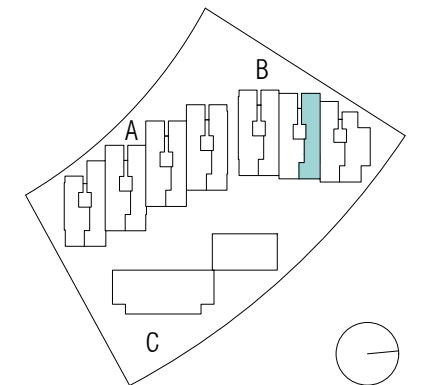
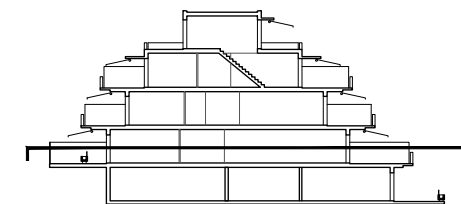
Enclosed Built Area Sup. Construida Cerrada	87,11 sqm.
Terrace Built Area Sup. Construida Terraza	33,64 sqm.
Common Areas Built Area Sup. Construida Zona Común	99,88 sqm.
Usable Area Sup. útil vivienda	76,39 sqm.
Usable Area (Decreto 218/2015) Sup. útil vivienda (Decreto 218/2015)	91,49 sqm.



Garage and storage room  
Plaza de garaje y trastero



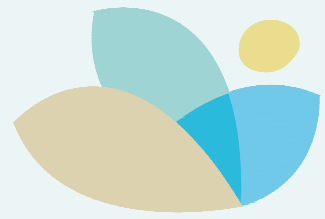
Building / Edificio B



DEVELOPER: QIP ARROYO ENMEDIO R5, S.L.U, Calle Periodista Pirula Arderius n 4 - 03001 Alicante B-42612861

NOTE: This plan is provisional and subject to any changes that may arise from licensing requirements or technical management criteria, without compromising quality. The furniture and household items that appear in the plan, including kitchen furniture, wardrobes and appliances, are merely for decorative purposes and are not included in the apartment. The location of the bathroom fixtures may vary slightly depending on the final assembly. The imperative determinations of the Executive Project or by implications works of the execution, can change the exact position of the facade of doors and windows, as well the surface area may also be increased or even decrease not more than a 10%. This is a non-contractual document.

**SALES & INFORMATION**  
**+34 690 000 444**  
**iseaestepona.com**



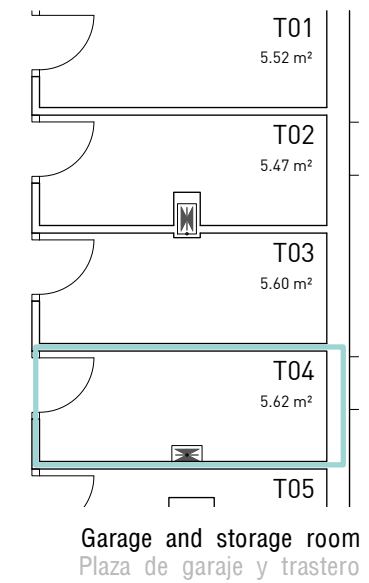
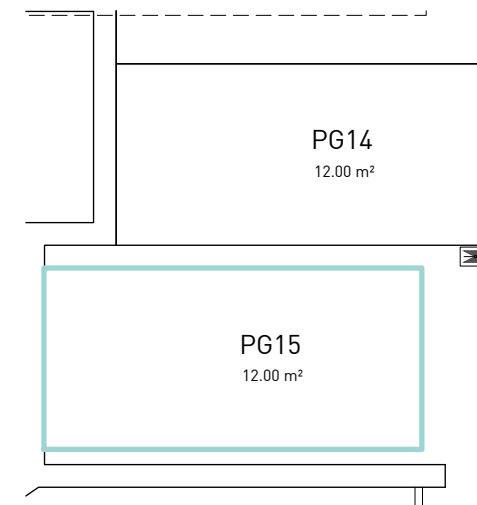
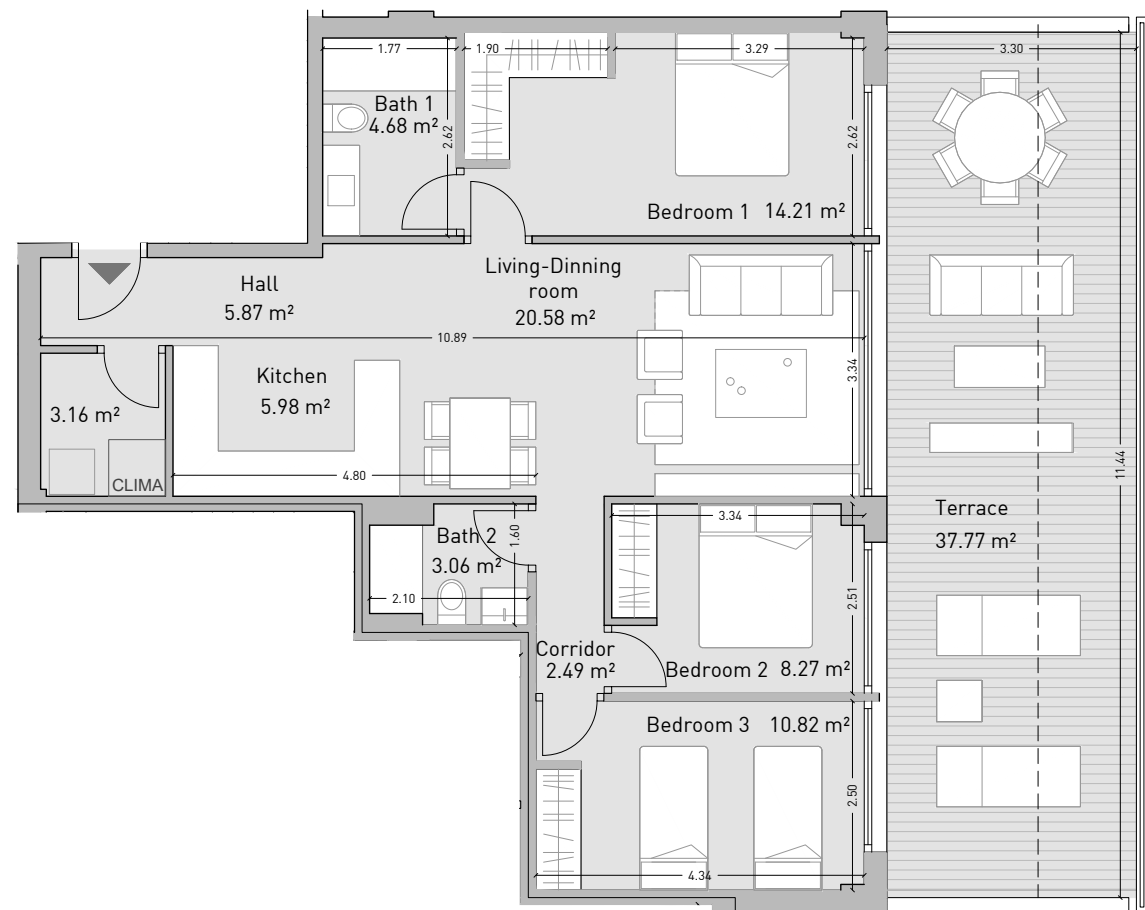
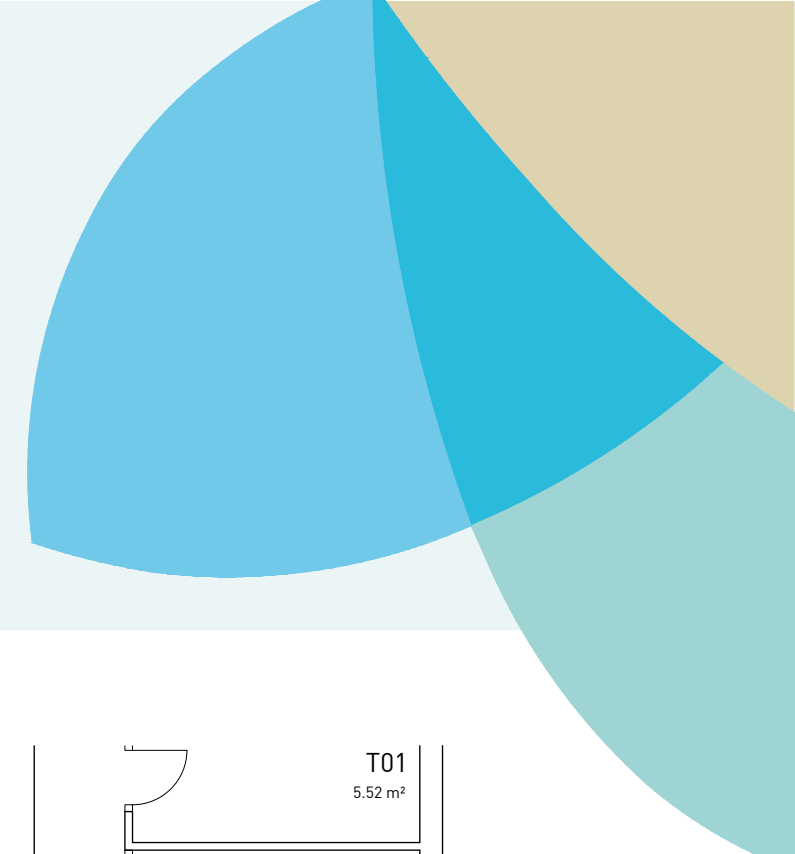
**ISEA**  
ESTEPONA

# Apartment 1.8A

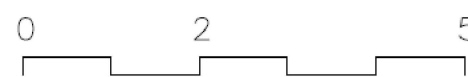
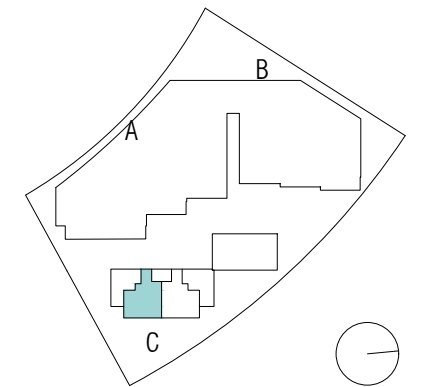
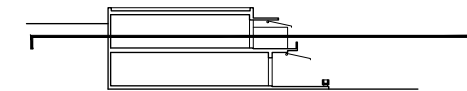
Vivienda

Ground floor. Block C  
Planta Baja. Bloque C

Enclosed Built Area Sup. Construida Cerrada	90,18 sqm.
Terrace Built Area Sup. Construida Terraza	41,34 sqm.
Common Areas Built Area Sup. Construida Zona Común	103,40 sqm.
Usable Area Sup. útil vivienda	79,12 sqm.
Usable Area (Decreto 218/2015) Sup. útil vivienda (Decreto 218/2015)	96,74 sqm.



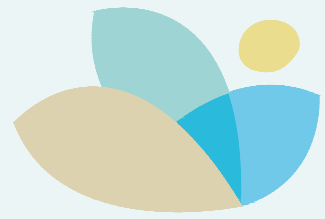
Building / Edificio C



DEVELOPER: QIP ARROYO ENMEDIO R5, S.L.U, Calle Periodista Pirula Arderius n 4 - 03001 Alicante B-42612861

NOTE: This plan is provisional and subject to any changes that may arise from licensing requirements or technical management criteria, without compromising quality. The furniture and household items that appear in the plan, including kitchen furniture, wardrobes and appliances, are merely for decorative purposes and are not included in the apartment. The location of the bathroom fixtures may vary slightly depending on the final assembly. The imperative determinations of the Executive Project or by implications works of the execution, can change the exact position of the facade of doors and windows, as well the surface area may also be increased or even decrease not more than a 10%. This is a non-contractual document.

**SALES & INFORMATION**  
**+34 690 000 444**  
**iseaestepona.com**



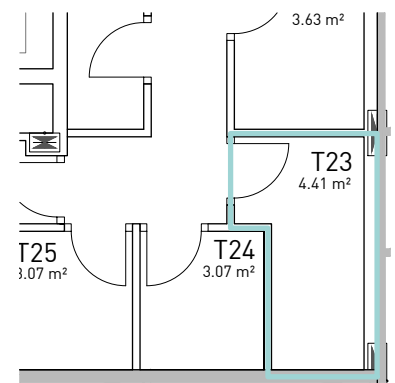
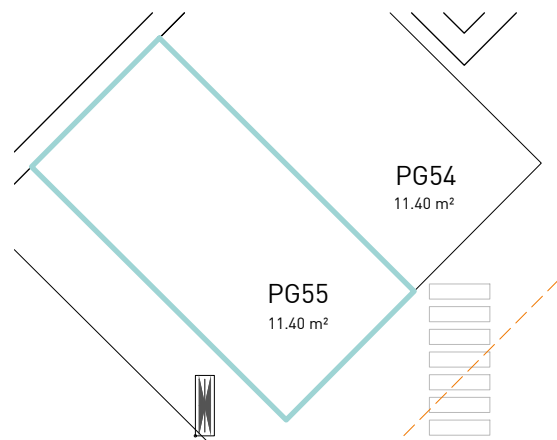
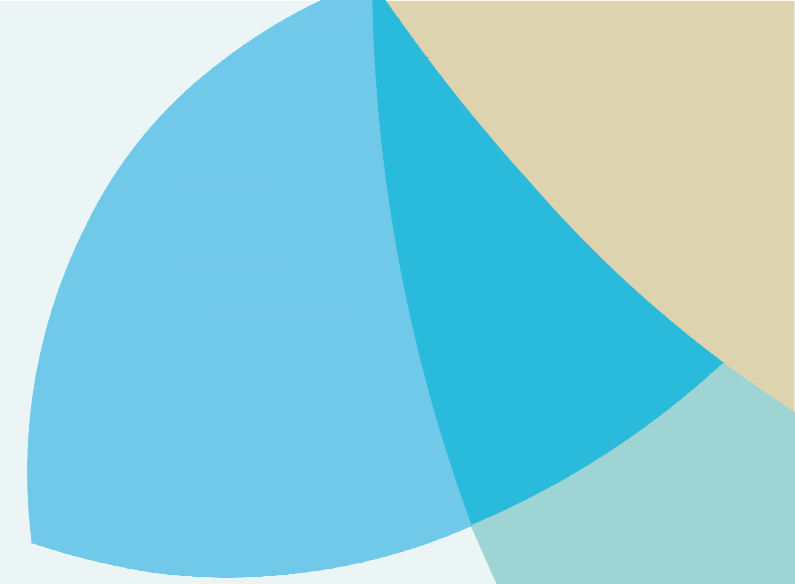
**ISEA**  
ESTEPONA

# Apartment 3.3A

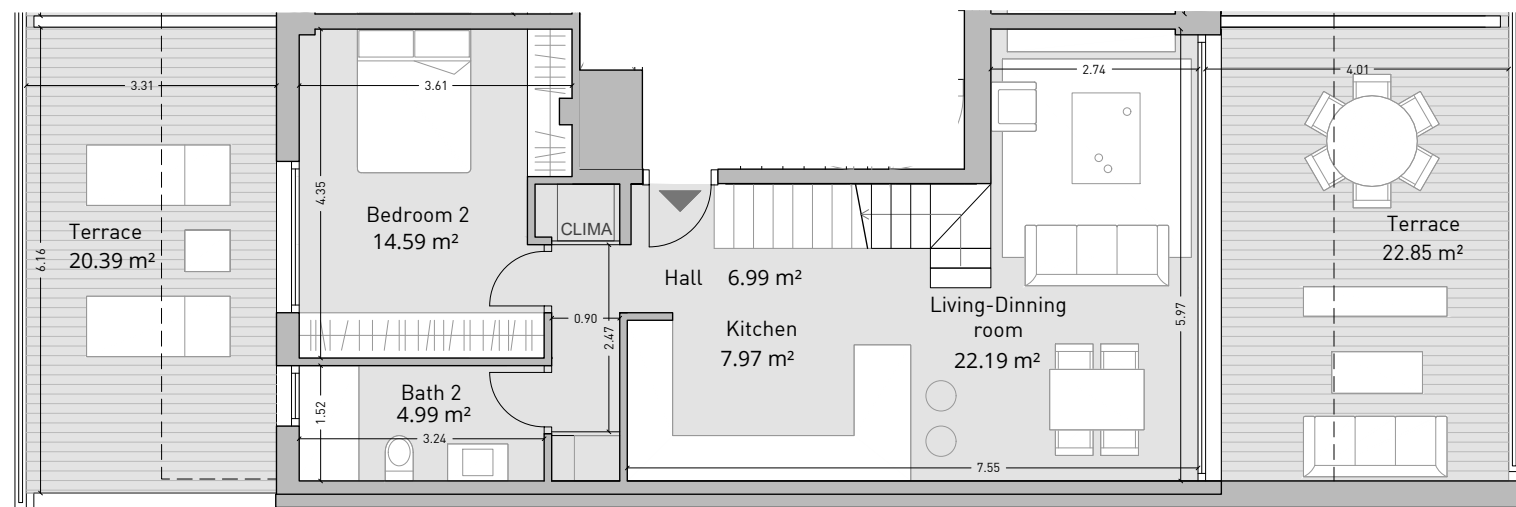
Vivienda

Second & Penthouse floor. Block A  
Planta Segunda & Ático. Bloque A

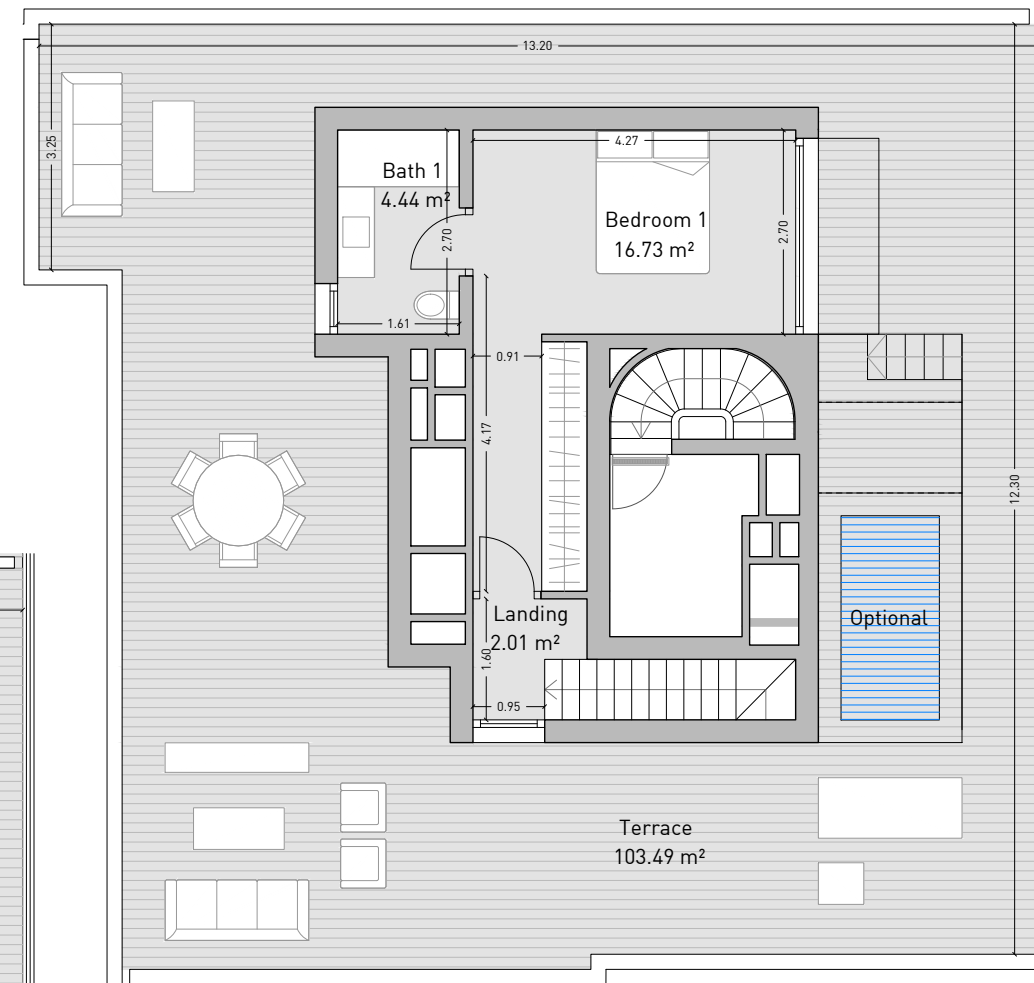
Enclosed Built Area Sup. Construida Cerrada	102,28 sqm.
Terrace Built Area Sup. Construida Terraza	158,78 sqm.
Common Areas Built Area Sup. Construida Zona Común	117,27 sqm.
Usable Area Sup. útil vivienda	79,21 sqm.
Usable Area (Decreto 218/2015) Sup. útil vivienda (Decreto 218/2015)	95,72 sqm.



Garage and storage room  
Plaza de garaje y trastero

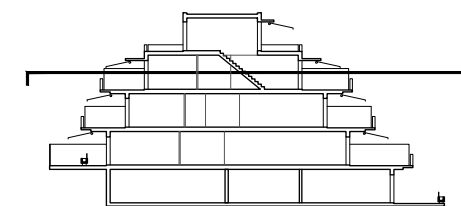
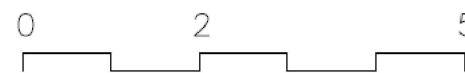
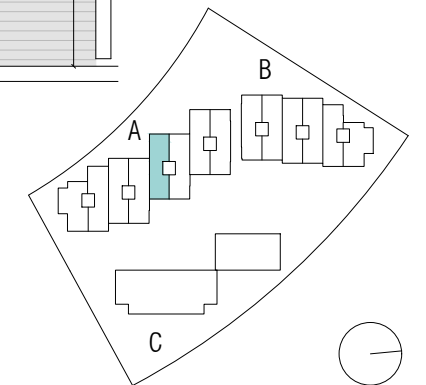


Second floor  
Planta segunda



Penthouse floor  
Planta ático

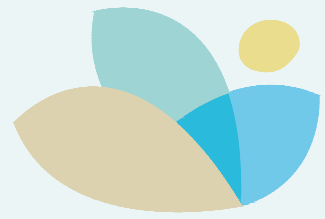
Building / Edificio A



DEVELOPER: QIP ARROYO ENMEDIO R5, S.L.U, Calle Periodista Pirula Arderius n 4 - 03001 Alicante B-42612861

NOTE: This plan is provisional and subject to any changes that may arise from licensing requirements or technical management criteria, without compromising quality. The furniture and household items that appear in the plan, including kitchen furniture, wardrobes and appliances, are merely for decorative purposes and are not included in the apartment. The location of the bathroom fixtures may vary slightly depending on the final assembly. The imperative determinations of the Executive Project or by implications works of the execution, can change the exact position of the facade of doors and windows, as well the surface area may also be increased or even decrease not more than a 10%. This is a non-contractual document.

**SALES & INFORMATION**  
**+34 690 000 444**  
**iseaestepona.com**



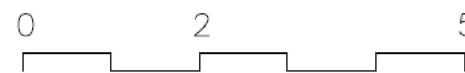
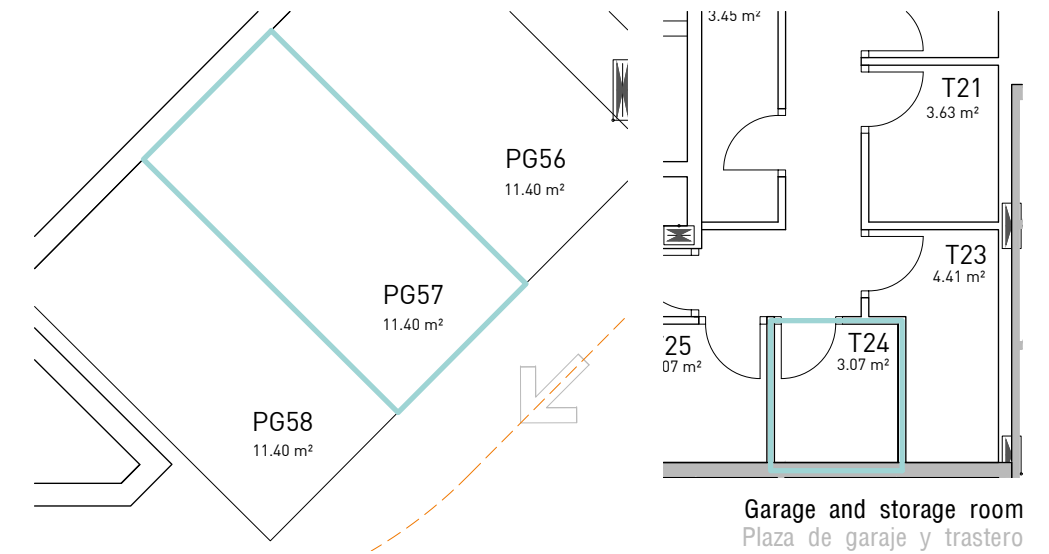
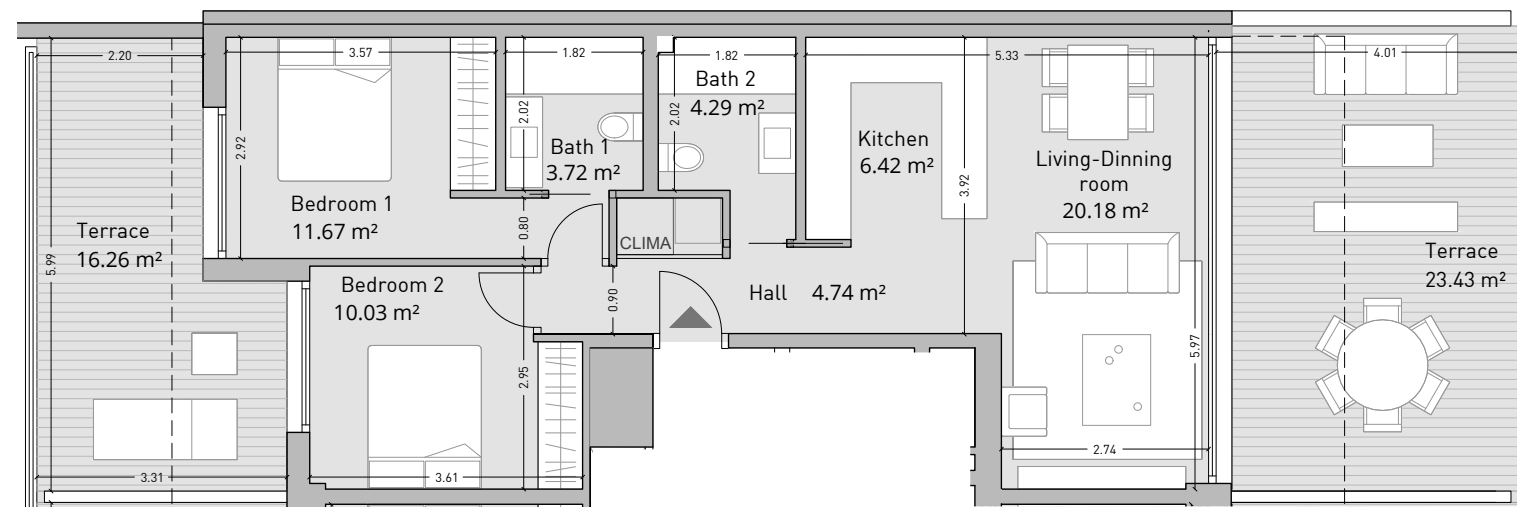
**ISEA**  
ESTEPONA

# Apartment 3.3B

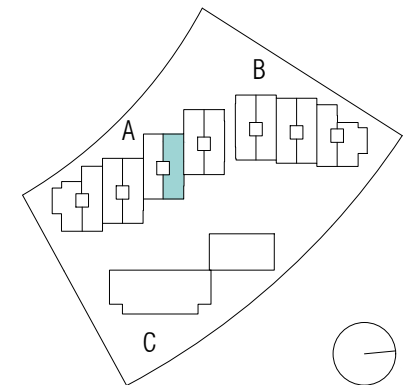
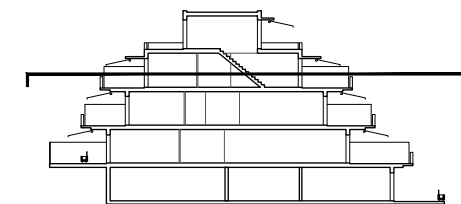
Vivienda

Second floor. Block A  
Planta Segunda. Bloque A

Enclosed Built Area Sup. Construida Cerrada	72,01 sqm.
Terrace Built Area Sup. Construida Terraza	43,35 sqm.
Common Areas Built Area Sup. Construida Zona Común	82,56 sqm.
Usable Area Sup. útil vivienda	61,05 sqm.
Usable Area (Decreto 218/2015) Sup. útil vivienda (Decreto 218/2015)	75,52 sqm.



Building / Edificio A



DEVELOPER: QIP ARROYO ENMEDIO R5, S.L.U, Calle Periodista Pirula Arderius n 4 - 03001 Alicante B-42612861

NOTE: This plan is provisional and subject to any changes that may arise from licensing requirements or technical management criteria, without compromising quality. The furniture and household items that appear in the plan, including kitchen furniture, wardrobes and appliances, are merely for decorative purposes and are not included in the apartment. The location of the bathroom fixtures may vary slightly depending on the final assembly. The imperative determinations of the Executive Project or by implications works of the execution, can change the exact position of the facade of doors and windows, as well the surface area may also be increased or even decrease not more than a 10%. This is a non-contractual document.

**SALES & INFORMATION**  
**+34 690 000 444**  
**iseaestepona.com**