



CONTACT: 0034 650 834 472
info@binomiumproperties.com
www.binomiumproperties.com

SELENE VILLAS
LO ROMERO GOLF - PILAR DE LA HORADADA

b binomium
properties




CONTACT: 0034 650 834 472
info@binomiumproperties.com
www.binomiumproperties.com

SELENE VILLAS

LO ROMERO GOLF - COSTA BLANCA

IMAGEN SUJETA A POSIBLES MODIFICACIONES DE ÍNDOLE TÉCNICA O JURÍDICA.
IMAGE SUBJECT TO POSSIBLE MODIFICATIONS FOR TECHNICAL OR LEGAL REASONS.

 binomium
properties

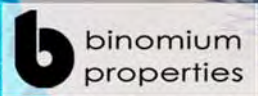


CONTACT: 0034 650 834 472
info@binomiumproperties.com
www.binomiumproperties.com

SELENE VILLAS

LO ROMERO GOLF - COSTA BLANCA

IMAGEN SUJETA A POSIBLES MODIFICACIONES DE ÍNDOLE TÉCNICA O JURÍDICA.
IMAGE SUBJECT TO POSSIBLE MODIFICATIONS FOR TECHNICAL OR LEGAL REASONS.

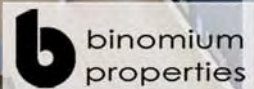




CONTACT: 0034 650 834 472
info@binomiumproperties.com
www.binomiumproperties.com

SELENE VILLAS
LO ROMERO GOLF - COSTA BLANCA

IMAGEN SUJETA A POSIBLES MODIFICACIONES DE ÍNDOLE TÉCNICA O JURÍDICA.
IMAGE SUBJECT TO POSSIBLE MODIFICATIONS FOR TECHNICAL OR LEGAL REASONS.



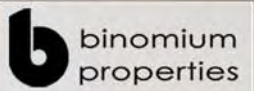


CONTACT: 0034 650 834 472
info@binomiumproperties.com
www.binomiumproperties.com

SELENE VILLAS

LO ROMERO GOLF - COSTA BLANCA

IMAGEN SUJETA A POSIBLES MODIFICACIONES DE INDOLE TÉCNICA O JURÍDICA.
IMAGE SUBJECT TO POSSIBLE MODIFICATIONS FOR TECHNICAL OR LEGAL REASONS.



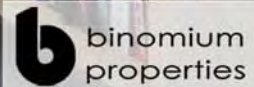


CONTACT: 0034 650 834 472
info@binomiumproperties.com
www.binomiumproperties.com

SELENE VILLAS

LO ROMERO GOLF - COSTA BLANCA

IMAGEN SUJETA A POSIBLES MODIFICACIONES DE ÍNDOLE TÉCNICA O JURÍDICA.
IMAGE SUBJECT TO POSSIBLE MODIFICATIONS FOR TECHNICAL OR LEGAL REASONS.



AV. SEVERIANO BALLESTEROS



CAMPO DE GOLF LO ROMERO

PASEO PEATONAL



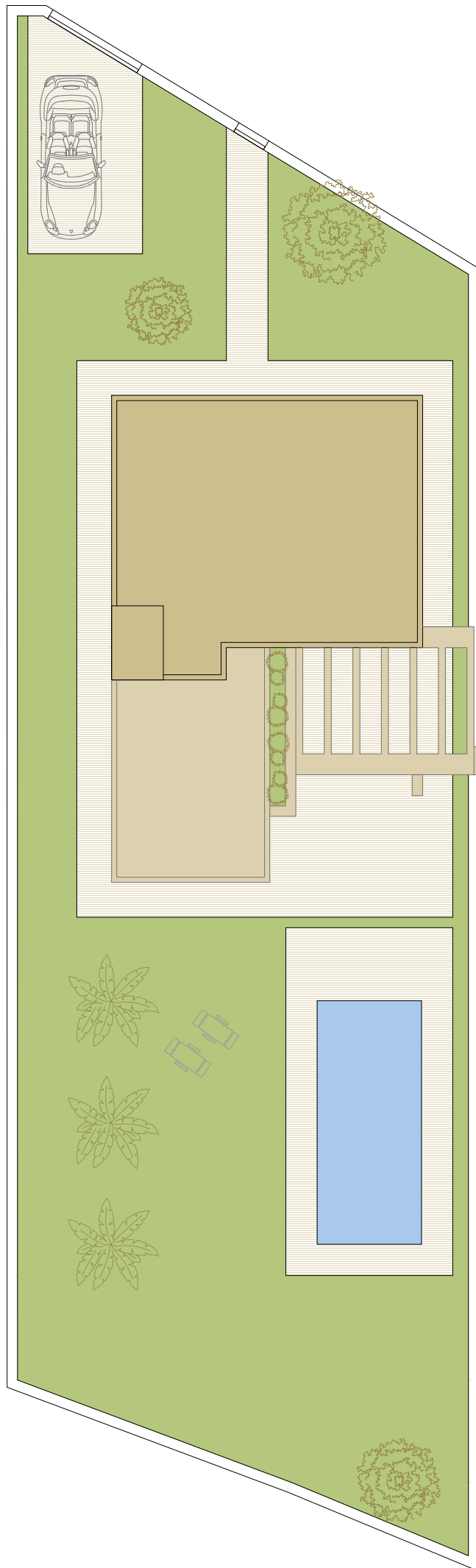
CONTACT: 0034 650 834 472
 info@binomiumproperties.com
 www.binomiumproperties.com

SELENE VILLAS

LO ROMERO GOLF - PILAR DE LA HORADADA

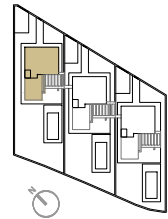


PLANO SUJETO A MODIFICACIONES DE INDOLE TÉCNICA O JURÍDICA. LAS SUPERFICIES SON APROXIMADAS / PLAN SUBJECT TO POSSIBLE MODIFICATIONS FOR TECHNICAL OR LEGAL REASONS. THE MEASUREMENTS SHOWN ARE APPROXIMATE



SELENE VILLAS

LO ROMERO GOLF - PILAR DE LA HORADADA



VIVIENDA TIPO V.1

SUPERFICIES ÚTILES / OCCUPIABLE AREA

PLANTA BAJA / GROUND FLOOR

SALÓN / LIVING ROOM	33.45 m ²
COCINA / KITCHEN	11.35 m ²
LAVADERO / LAUNDRY	4.60 m ²
DORMITORIO 1 / BEDROOM 1	14.00 m ²
BAÑO 1 / BATHROOM 1	2.40 m ²
BAÑO 2 / BATHROOM 2	5.50 m ²
PASO / CORRIDOR	3.50 m ²

PLANTA PRIMERA / FIRST FLOOR

DORMITORIO 2 / BEDROOM 2	10.25 m ²
DORMITORIO 3 / BEDROOM 3	16.35 m ²
BAÑO 3 / BATHROOM 3	3.50 m ²
BAÑO 4 / BATHROOM 4	3.50 m ²
PASO / CORRIDOR	2.55 m ²
ESCALERA / STAIRS	5.40 m ²

PORCHE / PORCH	19.60 m ²
TERRAZA 1 / TERRACE 1	9.20 m ²
TERRAZA 2 / TERRACE 2	24.80 m ²

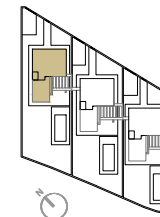
SUPERFICIES CONST. / BUILT AREA

SUP. CERRADA / CLOSED AREA	154.20 m ²
CLOSED AREA + PORCHE + TERRACES	207.80 m ²

PARCELA / PLOT	522.00 m ²
----------------	-----------------------



CONTACT: 0034 650 834 472
info@binomiumproperties.com
www.binomiumproperties.com



VIVIENDA TIPO V.1

SUPERFICIES ÚTILES / OCCUPIABLE AREA

PLANTA BAJA / GROUND FLOOR	
SALÓN / LIVING ROOM	33.45 m ²
COCINA / KITCHEN	11.35 m ²
LAVADERO / LAUNDRY	4.60 m ²
DORMITORIO 1 / BEDROOM 1	14.00 m ²
BAÑO 1 / BATHROOM 1	2.40 m ²
BAÑO 2 / BATHROOM 2	5.50 m ²
PASO / CORRIDOR	3.50 m ²

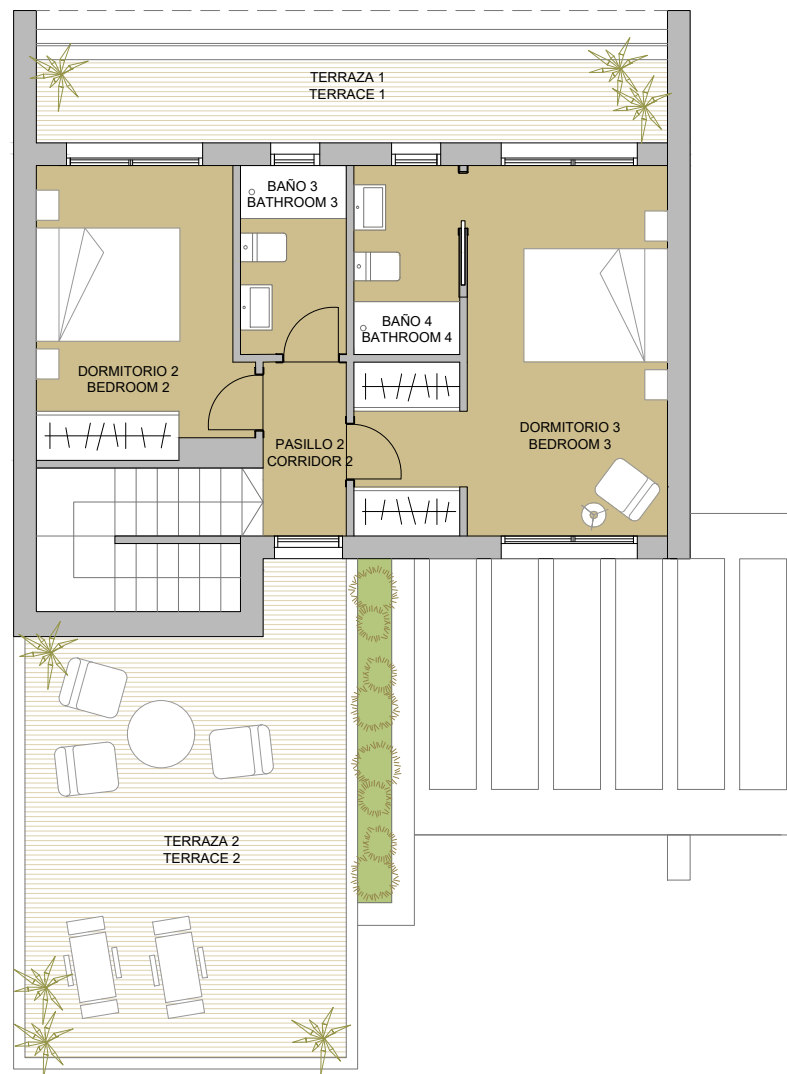
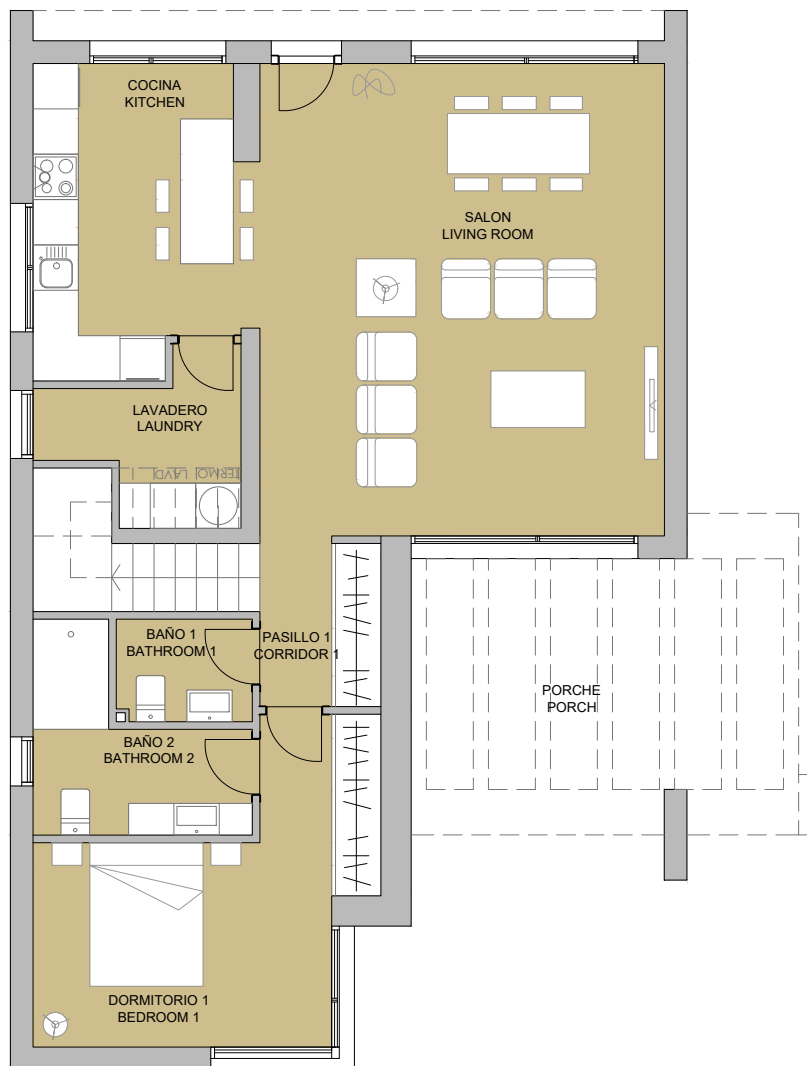
PLANTA PRIMERA / FIRST FLOOR	
DORMITORIO 2 / BEDROOM 2	10.25 m ²
DORMITORIO 3 / BEDROOM 3	16.35 m ²
BAÑO 3 / BATHROOM 3	3.50 m ²
BAÑO 4 / BATHROOM 4	3.50 m ²
PASO / CORRIDOR	2.55 m ²
ESCALERA / STAIRS	5.40 m ²

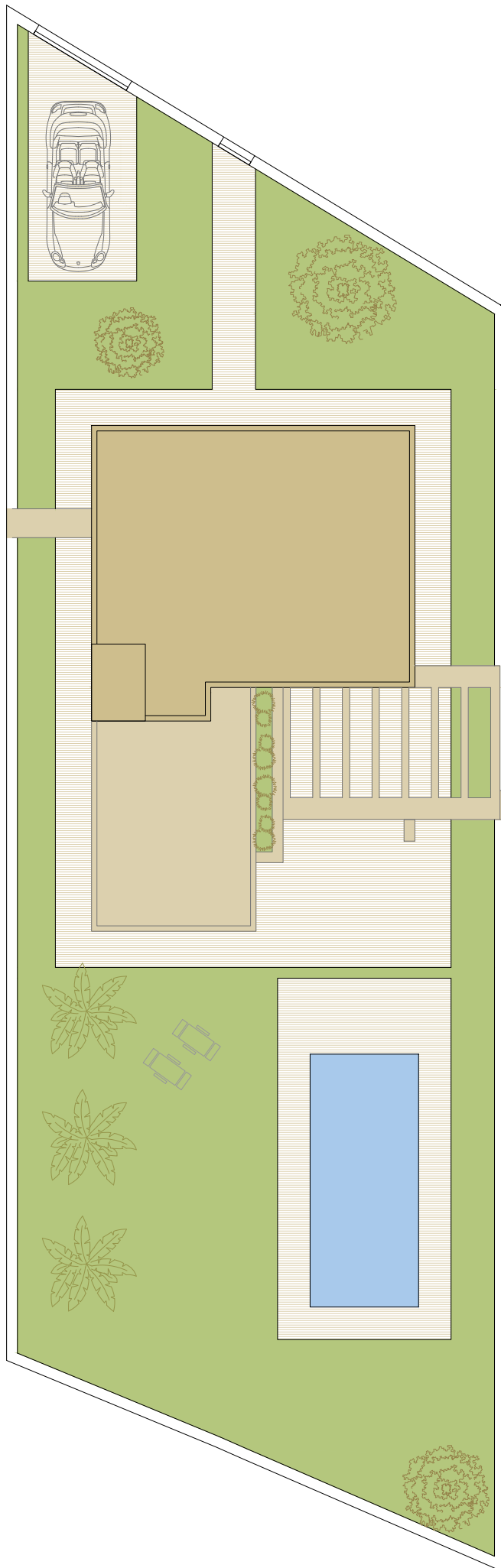
PORCHE / PORCH	19.60 m ²
TERRAZA 1 / TERRACE 1	9.20 m ²
TERRAZA 2 / TERRACE 2	24.80 m ²

SUPERFICIES CONST. / BUILT AREA

SUP. CERRADA / CLOSED AREA	154.20 m ²
CLOSED AREA + PORCHE + TERRACES	207.80 m ²

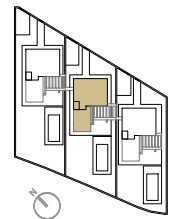
PARCELA / PLOT	522.00 m ²
----------------	-----------------------





SELENE VILLAS

LO ROMERO GOLF - PILAR DE LA HORADADA



VIVIENDA TIPO V.2

SUPERFICIES ÚTILES / OCCUPIABLE AREA

PLANTA BAJA / GROUND FLOOR

SALÓN / LIVING ROOM	33.45 m ²
COCINA / KITCHEN	11.35 m ²
LAVADERO / LAUNDRY	4.60 m ²
DORMITORIO 1 / BEDROOM 1	14.00 m ²
BAÑO 1 / BATHROOM 1	2.40 m ²
BAÑO 2 / BATHROOM 2	5.50 m ²
PASO / CORRIDOR	3.50 m ²

PLANTA PRIMERA / FIRST FLOOR

DORMITORIO 2 / BEDROOM 2	10.25 m ²
DORMITORIO 3 / BEDROOM 3	16.35 m ²
BAÑO 3 / BATHROOM 3	3.50 m ²
BAÑO 4 / BATHROOM 4	3.50 m ²
PASO / CORRIDOR	2.55 m ²
ESCALERA / STAIRS	5.40 m ²

PORCHE / PORCH	22.60 m ²
TERRAZA 1 / TERRACE 1	9.20 m ²
TERRAZA 2 / TERRACE 2	24.80 m ²

SUPERFICIES CONST. / BUILT AREA

SUP. CERRADA / CLOSED AREA	154.20 m ²
CLOSED AREA + PORCHE + TERRACES	210.80 m ²

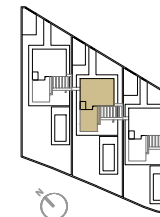
PARCELA / PLOT	490.00 m ²
----------------	-----------------------



CONTACT: 0034 650 834 472
 info@binomiumproperties.com
 www.binomiumproperties.com

SELENE VILLAS

LO ROMERO GOLF - PILAR DE LA HORADADA



VIVIENDA TIPO V.2

SUPERFICIES ÚTILES / OCCUPIABLE AREA

PLANTA BAJA / GROUND FLOOR

SALÓN / LIVING ROOM	33.45 m ²
COCINA / KITCHEN	11.35 m ²
LAVADERO / LAUNDRY	4.60 m ²
DORMITORIO 1 / BEDROOM 1	14.00 m ²
BAÑO 1 / BATHROOM 1	2.40 m ²
BAÑO 2 / BATHROOM 2	5.50 m ²
PASO / CORRIDOR	3.50 m ²

PLANTA PRIMERA / FIRST FLOOR

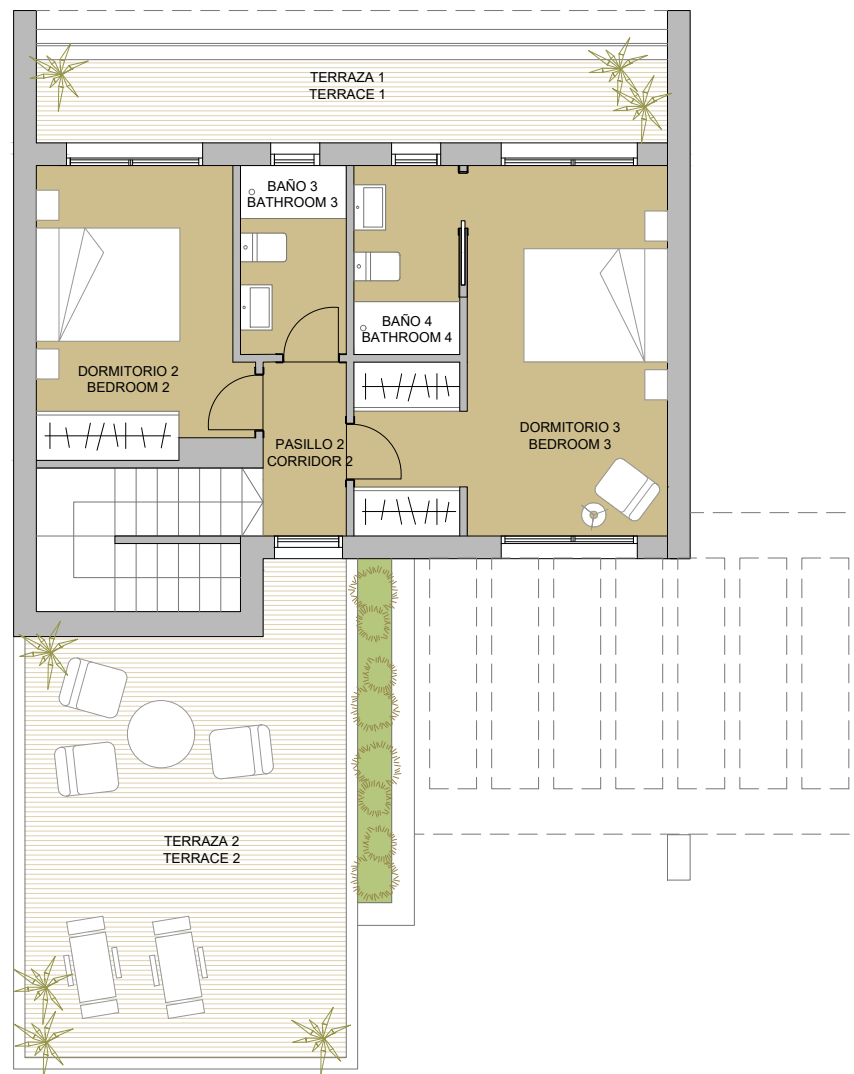
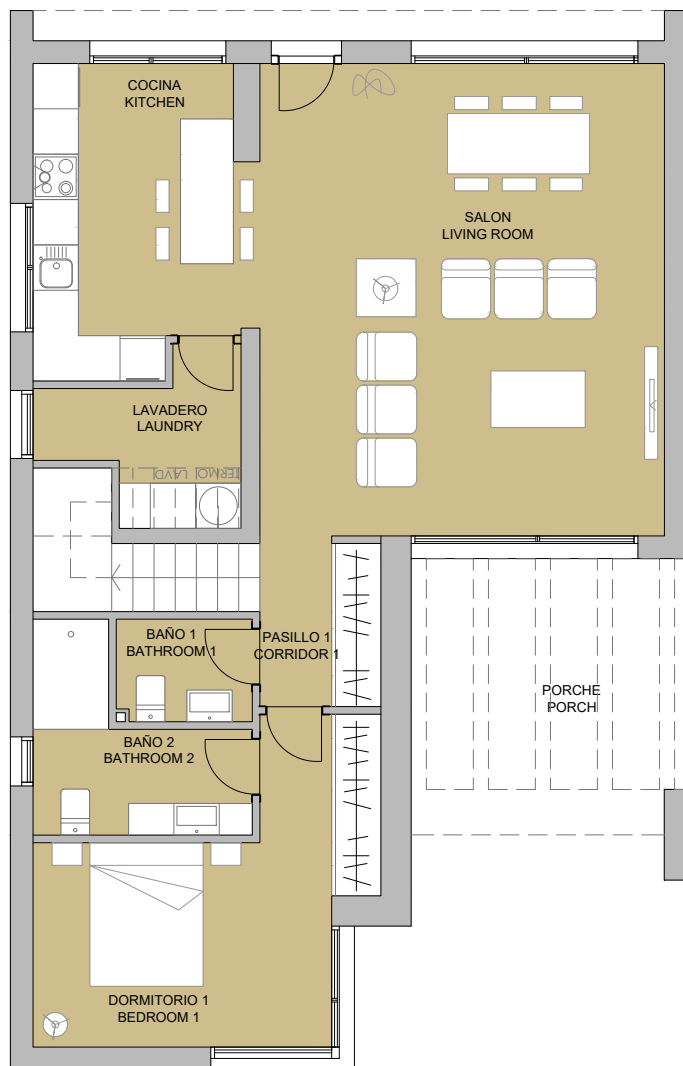
DORMITORIO 2 / BEDROOM 2	10.25 m ²
DORMITORIO 3 / BEDROOM 3	16.35 m ²
BAÑO 3 / BATHROOM 3	3.50 m ²
BAÑO 4 / BATHROOM 4	3.50 m ²
PASO / CORRIDOR	2.55 m ²
ESCALERA / STAIRS	5.40 m ²

PORCHE / PORCH	22.60 m ²
TERRAZA 1 / TERRACE 1	9.20 m ²
TERRAZA 2 / TERRACE 2	24.80 m ²

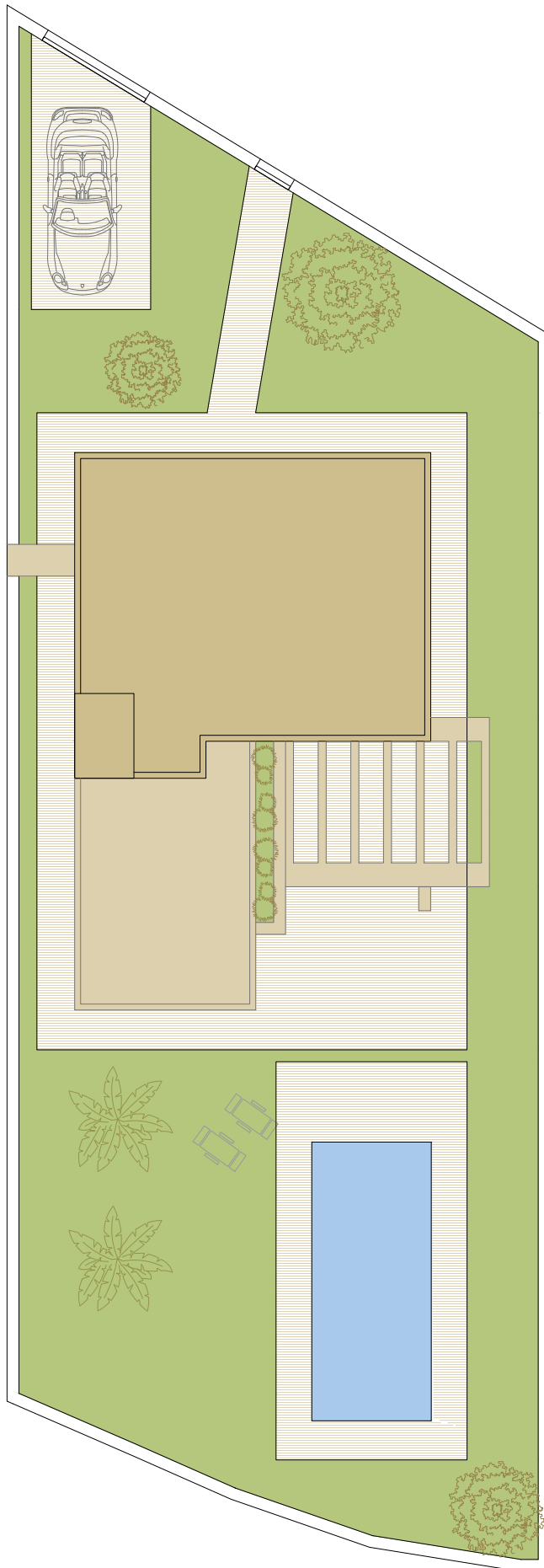
SUPERFICIES CONST. / BUILT AREA

SUP. CERRADA / CLOSED AREA	154.20 m ²
CLOSED AREA + PORCHE + TERRACES	210.80 m ²

PARCELA / PLOT	490.00 m ²
----------------	-----------------------

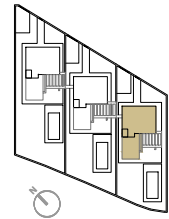


CONTACT: 0034 650 834 472
info@binomiumproperties.com
www.binomiumproperties.com



SELENE VILLAS

LO ROMERO GOLF - PILAR DE LA HORADADA



VIVIENDA TIPO V.3

SUPERFICIES ÚTILES / OCCUPIABLE AREA

PLANTA BAJA / GROUND FLOOR

SALÓN / LIVING ROOM	33.45 m ²
COCINA / KITCHEN	11.35 m ²
LAVADERO / LAUNDRY	4.60 m ²
DORMITORIO 1 / BEDROOM 1	14.00 m ²
BAÑO 1 / BATHROOM 1	2.40 m ²
BAÑO 2 / BATHROOM 2	5.50 m ²
PASO / CORRIDOR	3.50 m ²

PLANTA PRIMERA / FIRST FLOOR

DORMITORIO 2 / BEDROOM 2	10.25 m ²
DORMITORIO 3 / BEDROOM 3	16.35 m ²
BAÑO 3 / BATHROOM 3	3.50 m ²
BAÑO 4 / BATHROOM 4	3.50 m ²
PASO / CORRIDOR	2.55 m ²
ESCALERA / STAIRS	5.40 m ²

PORCHE / PORCH	19.60 m ²
TERRAZA 1 / TERRACE 1	9.20 m ²
TERRAZA 2 / TERRACE 2	24.80 m ²

SUPERFICIES CONST. / BUILT AREA

SUP. CERRADA / CLOSED AREA	154.20 m ²
CLOSED AREA + PORCHE + TERRACES	207.80 m ²

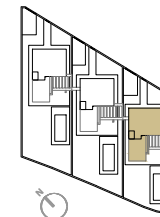
PARCELA / PLOT	453.20 m ²
----------------	-----------------------



CONTACT: 0034 650 834 472
 info@binomiumproperties.com
 www.binomiumproperties.com

SELENE VILLAS

LO ROMERO GOLF - PILAR DE LA HORADADA



VIVIENDA TIPO V.3

SUPERFICIES ÚTILES / OCCUPIABLE AREA

PLANTA BAJA / GROUND FLOOR

SALÓN / LIVING ROOM	33.45 m ²
COCINA / KITCHEN	11.35 m ²
LAVADERO / LAUNDRY	4.60 m ²
DORMITORIO 1 / BEDROOM 1	14.00 m ²
BAÑO 1 / BATHROOM 1	2.40 m ²
BAÑO 2 / BATHROOM 2	5.50 m ²
PASO / CORRIDOR	3.50 m ²

PLANTA PRIMERA / FIRST FLOOR

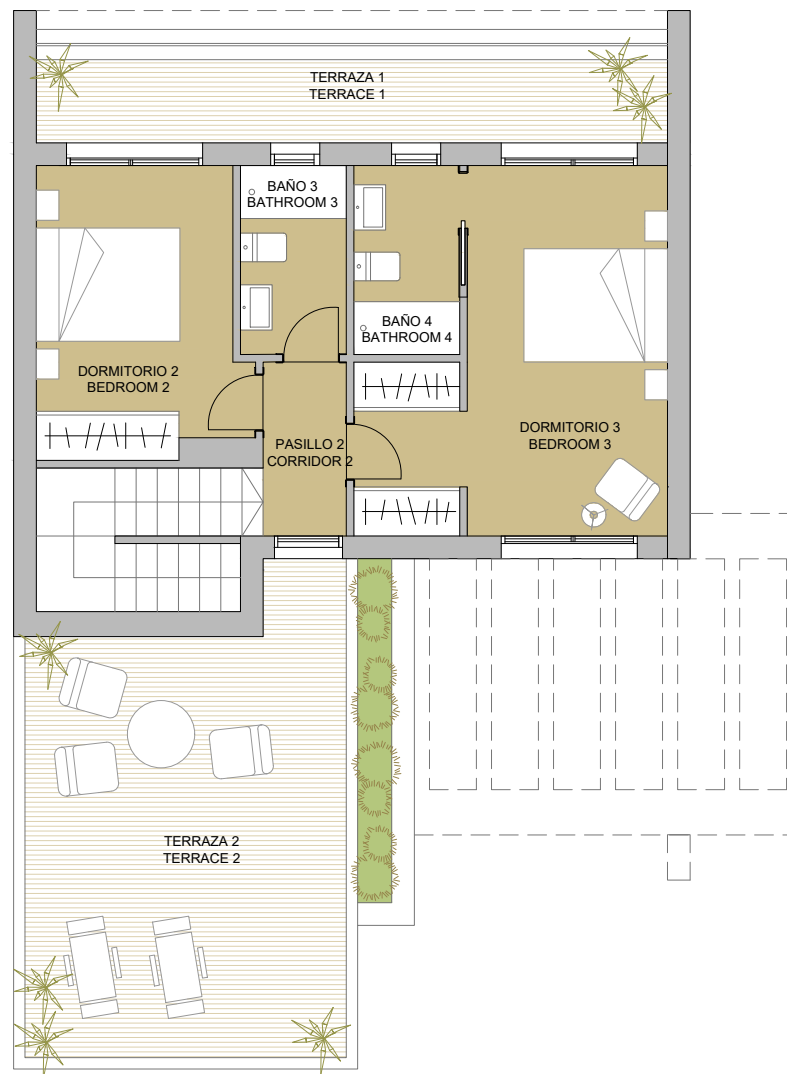
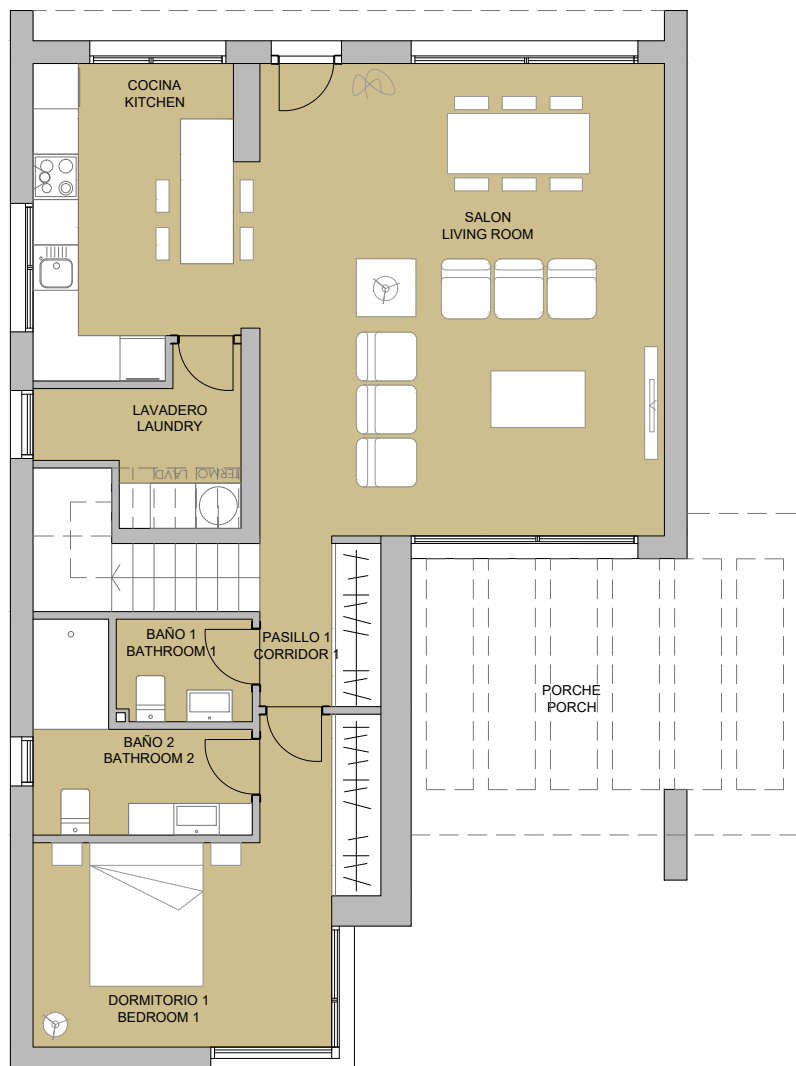
DORMITORIO 2 / BEDROOM 2	10.25 m ²
DORMITORIO 3 / BEDROOM 3	16.35 m ²
BAÑO 3 / BATHROOM 3	3.50 m ²
BAÑO 4 / BATHROOM 4	3.50 m ²
PASO / CORRIDOR	2.55 m ²
ESCALERA / STAIRS	5.40 m ²

PORCHE / PORCH	19.60 m ²
TERRAZA 1 / TERRACE 1	9.20 m ²
TERRAZA 2 / TERRACE 2	24.80 m ²

SUPERFICIES CONST. / BUILT AREA

SUP. CERRADA / CLOSED AREA	154.20 m ²
CLOSED AREA + PORCHE + TERRACES	207.80 m ²

PARCELA / PLOT	453.20 m ²
----------------	-----------------------



CONTACT: 0034 650 834 472
info@binomiumproperties.com
www.binomiumproperties.com